

The Forest City Basin

Back to the Future

NOGCC.NE.GOV

Marvin P. Carlson rockdrmpc@hotmail.com

Nebraska Geological Survey Emeritus

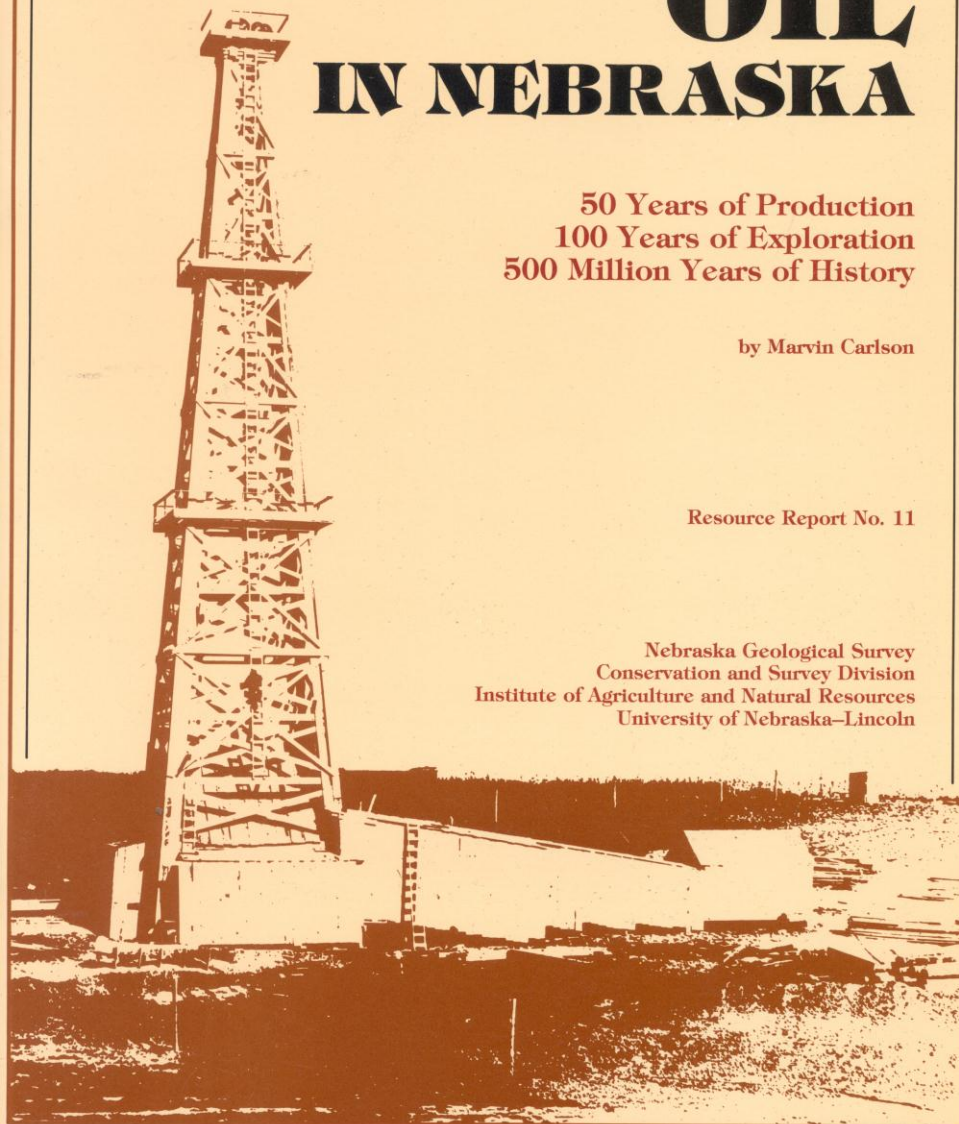
OIL IN NEBRASKA

50 Years of Production
100 Years of Exploration
500 Million Years of History

by Marvin Carlson

Resource Report No. 11

Nebraska Geological Survey
Conservation and Survey Division
Institute of Agriculture and Natural Resources
University of Nebraska—Lincoln



BACK

**Wallace Lee, 1943
Kansas Geological Bulletin 51**

**Wallace Lee et al, 1946
USGS Oil and Gas Preliminary Map 48
7 Sheets**

FUTURE ISSUES

BOUNDING STRUCTURES

DEPOSITIONAL PATTERNS

RESERVOIRS

OIL SOURCE/TIMING

FIELD STRUCTURES

FUTURE ISSUES

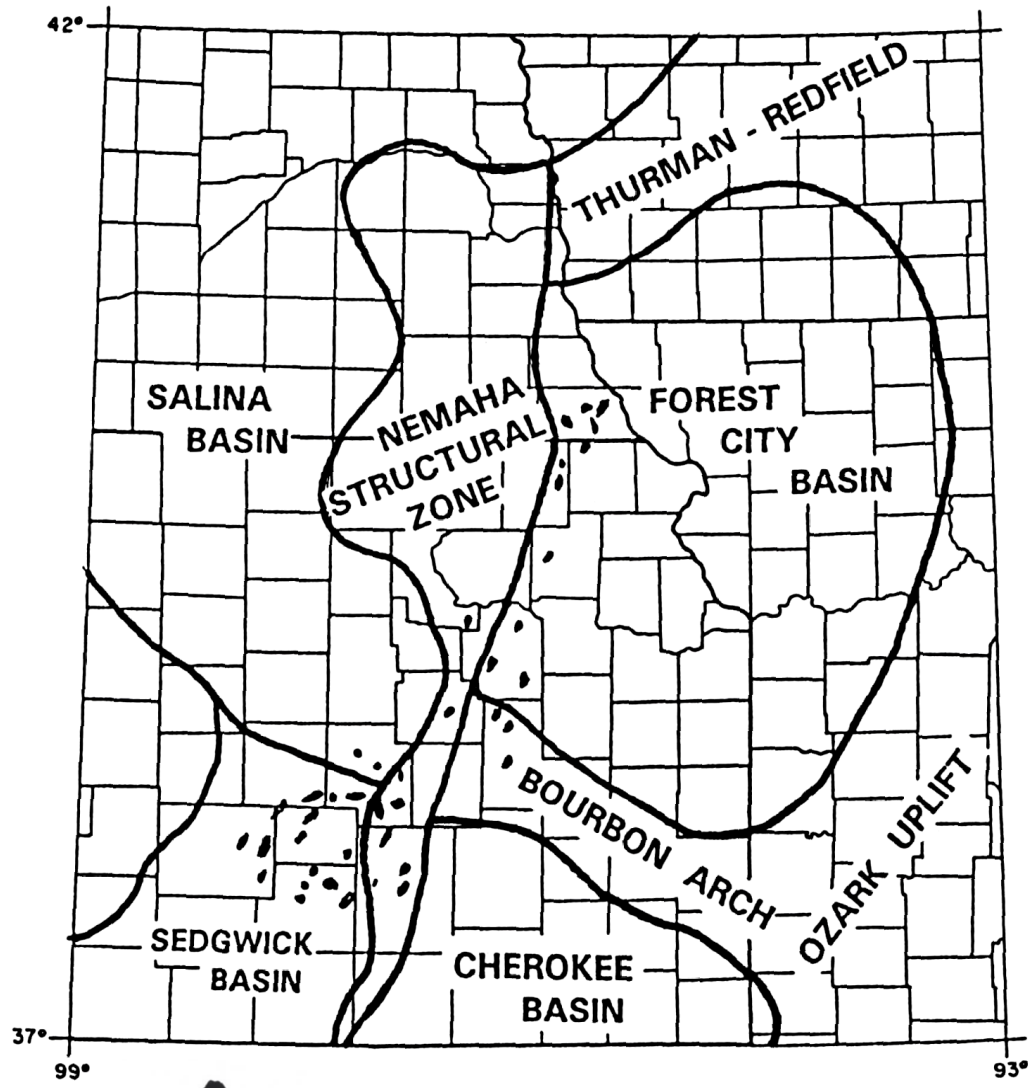
BOUNDING STRUCTURES

DEPOSITIONAL PATTERNS

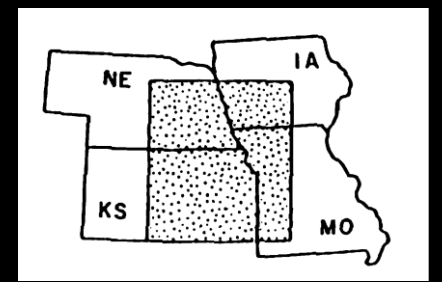
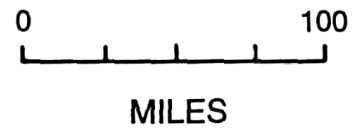
RESERVOIRS

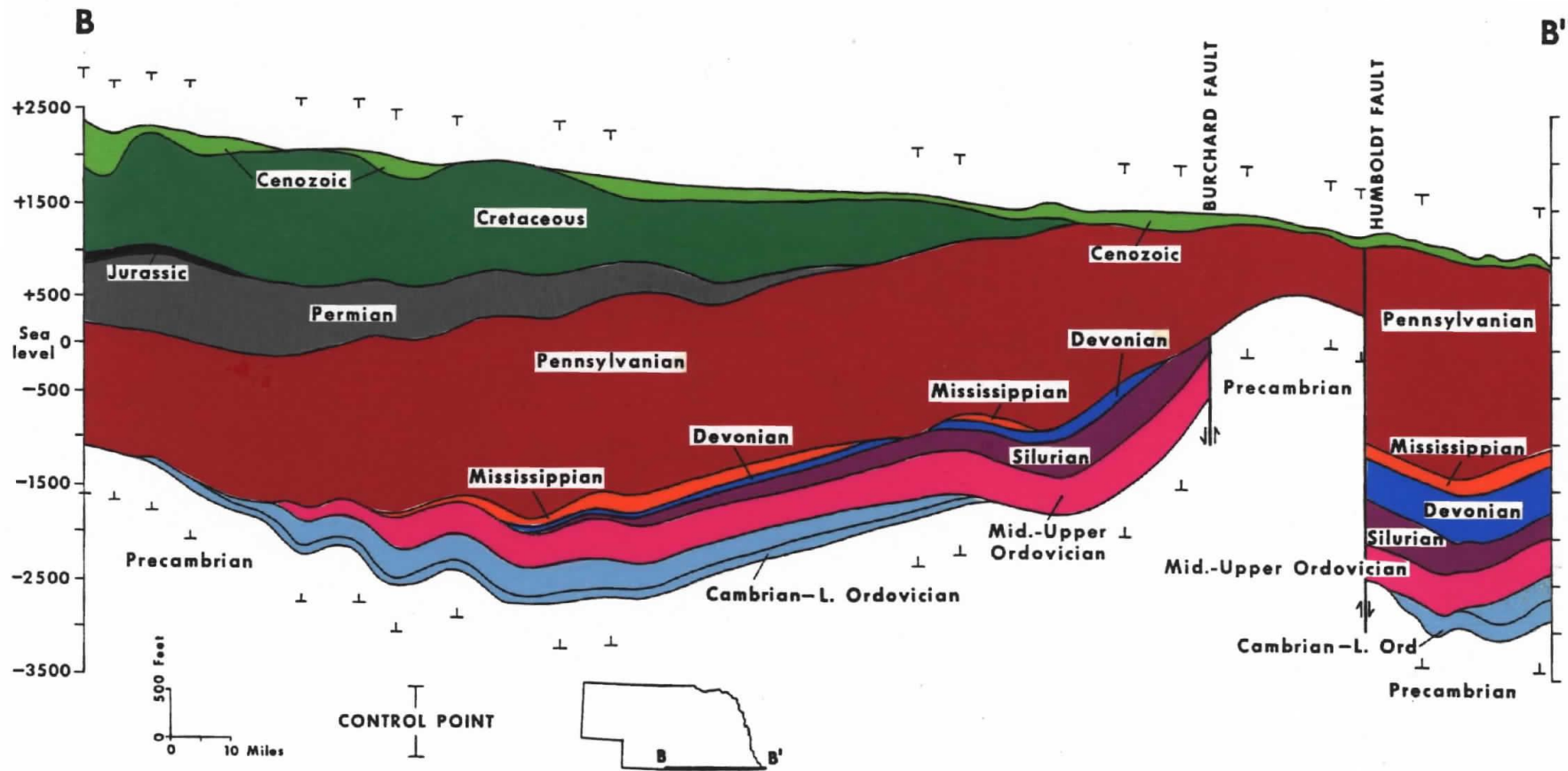
OIL SOURCE/TIMING

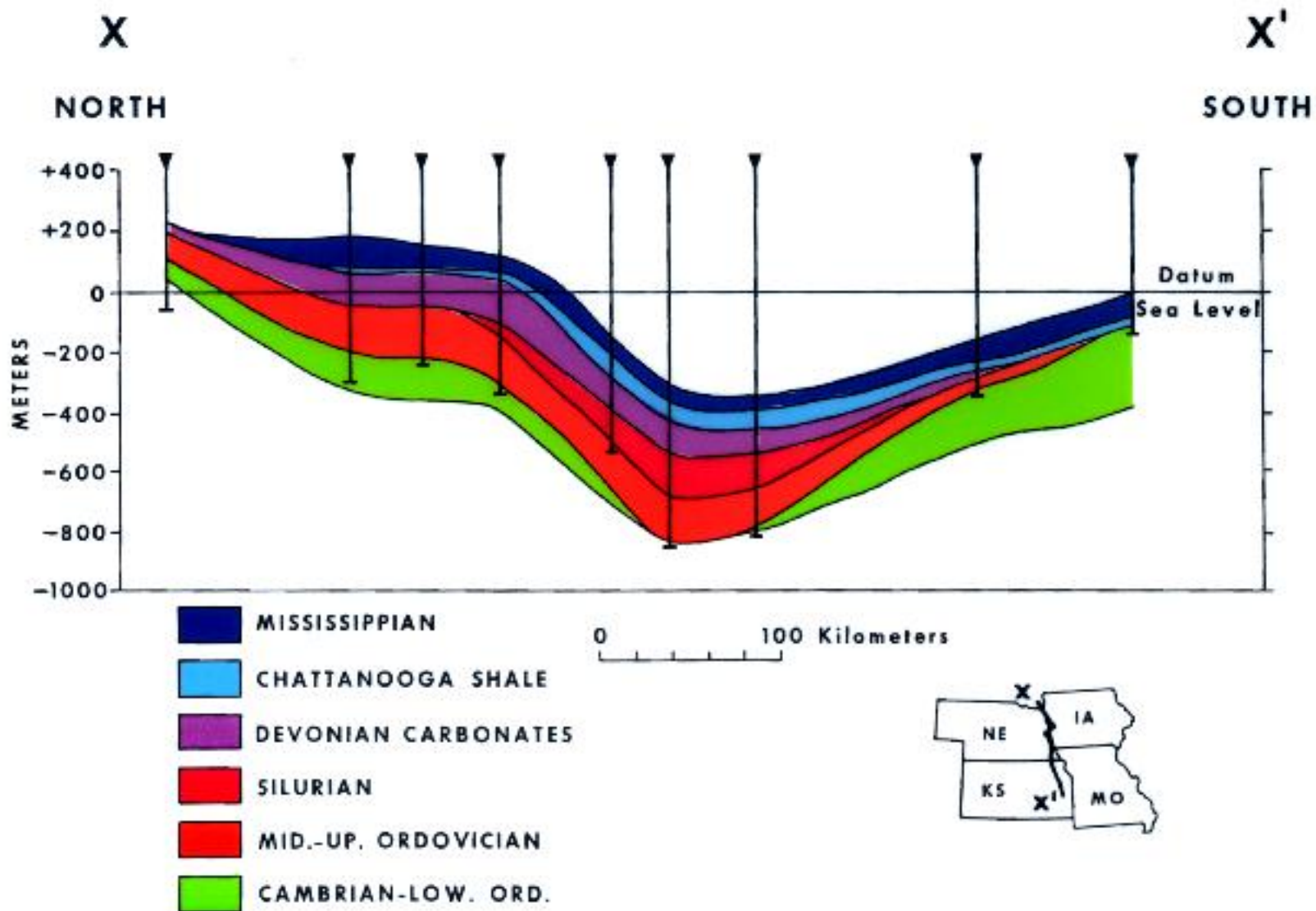
FIELD STRUCTURES




 Hunton
 Oil Fields







FUTURE ISSUES

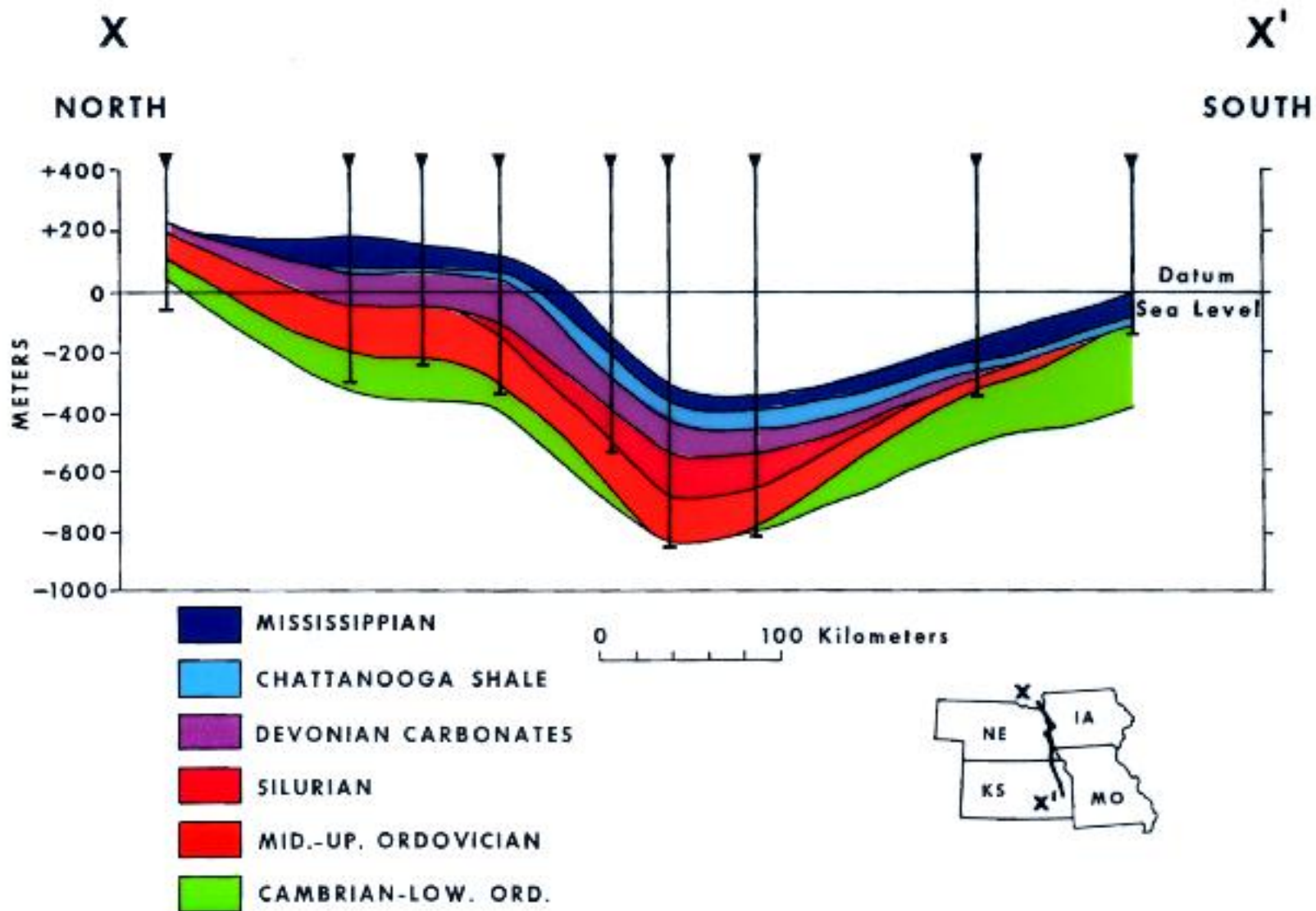
BOUNDING STRUCTURES

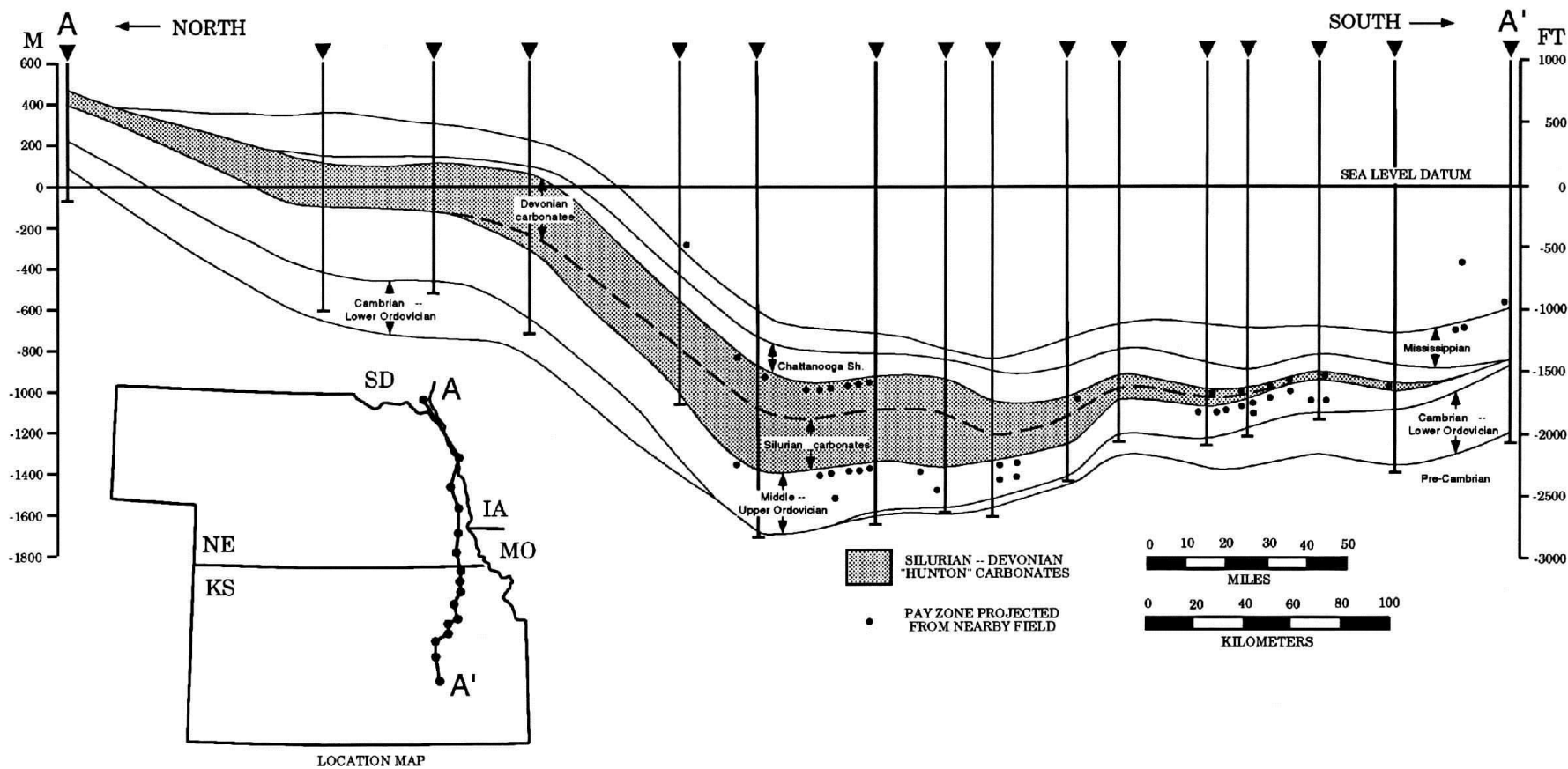
DEPOSITIONAL PATTERNS

RESERVOIRS

OIL SOURCE/TIMING

FIELD STRUCTURES





FUTURE ISSUES

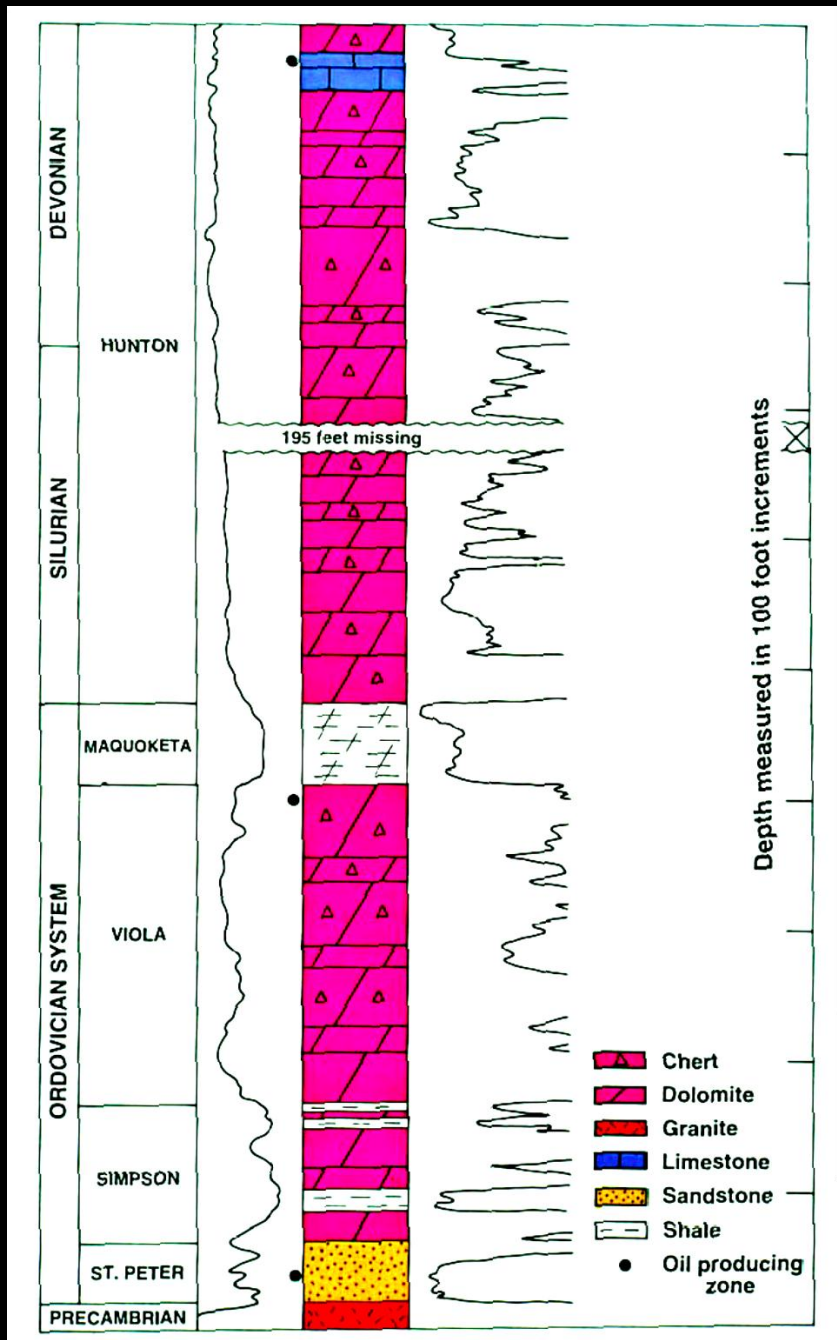
BOUNDING STRUCTURES








DEPOSITIONAL PATTERNS

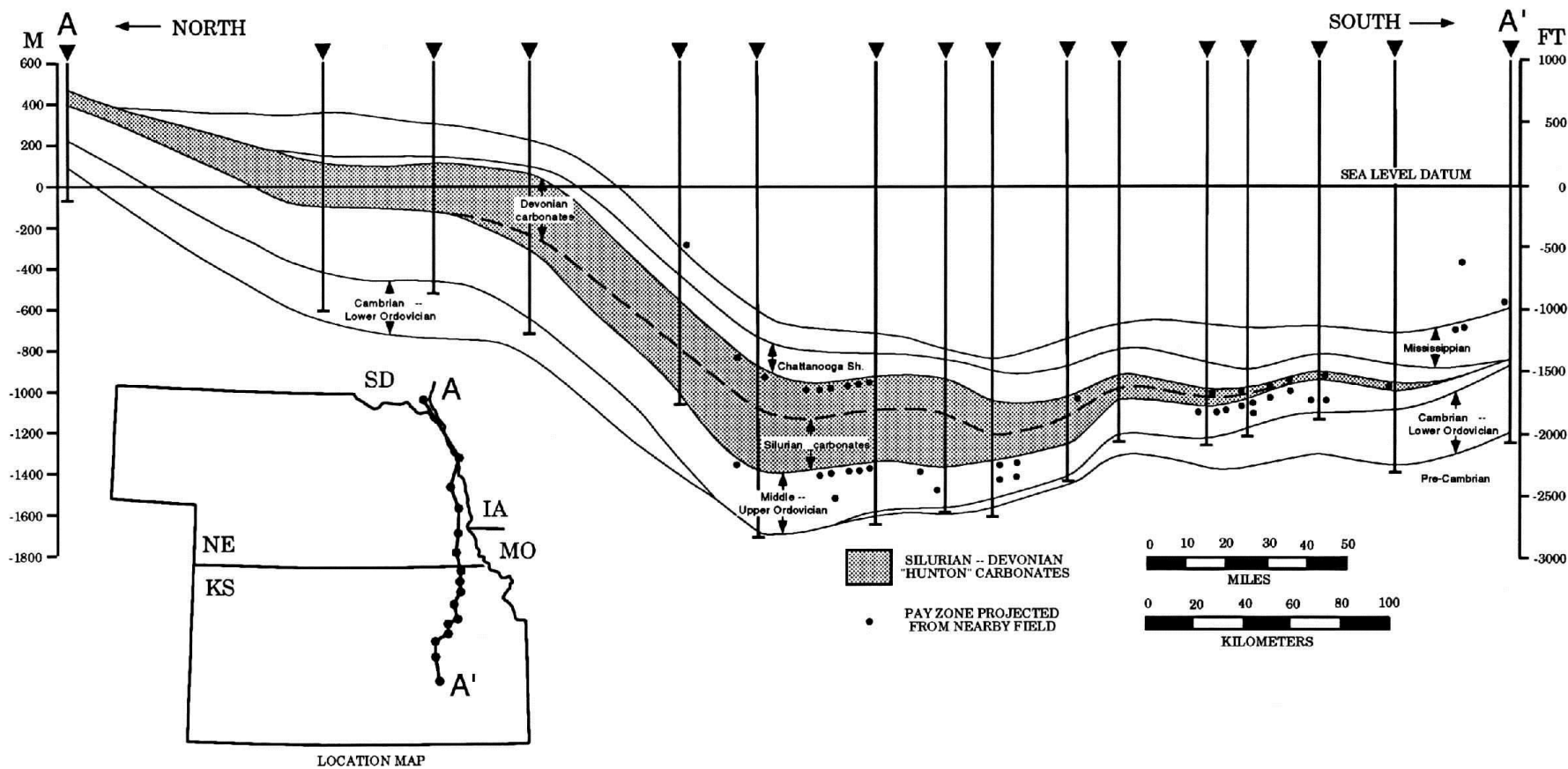
RESERVOIRS

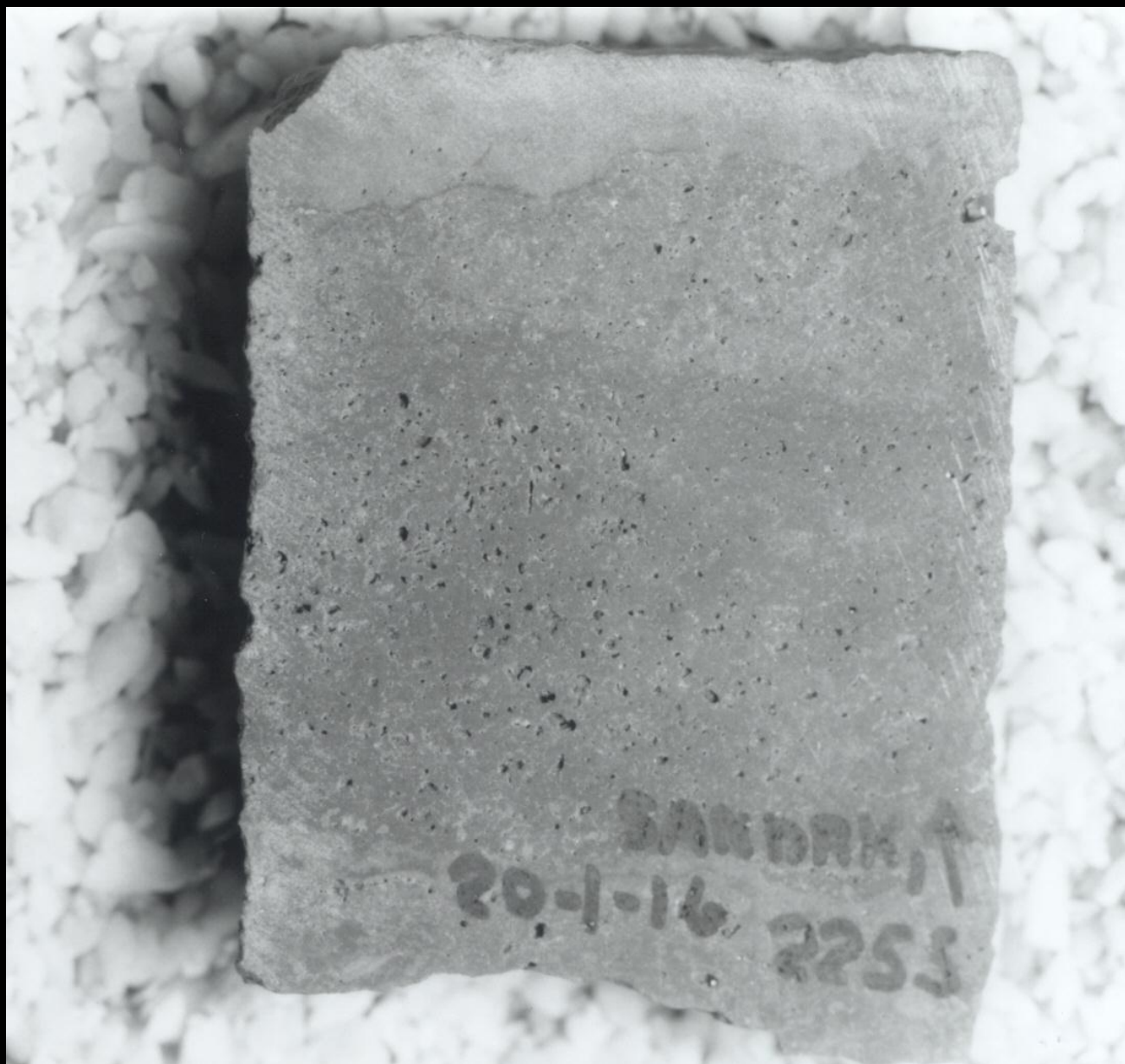
OIL SOURCE/TIMING

FIELD STRUCTURES



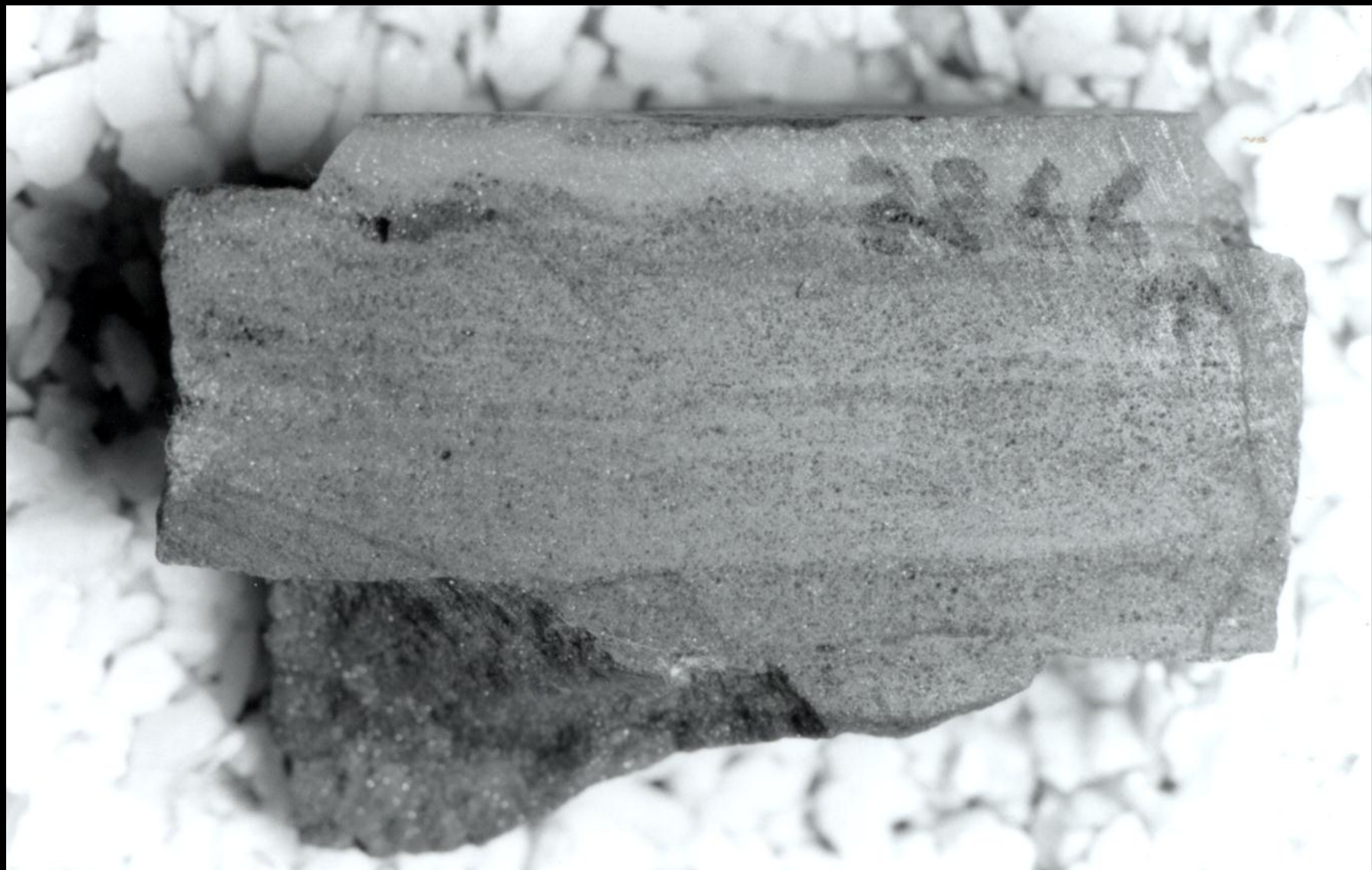
-  Chert
-  Dolomite
-  Granite
-  Limestone
-  Sandstone
-  Shale
-  Oil producing zone





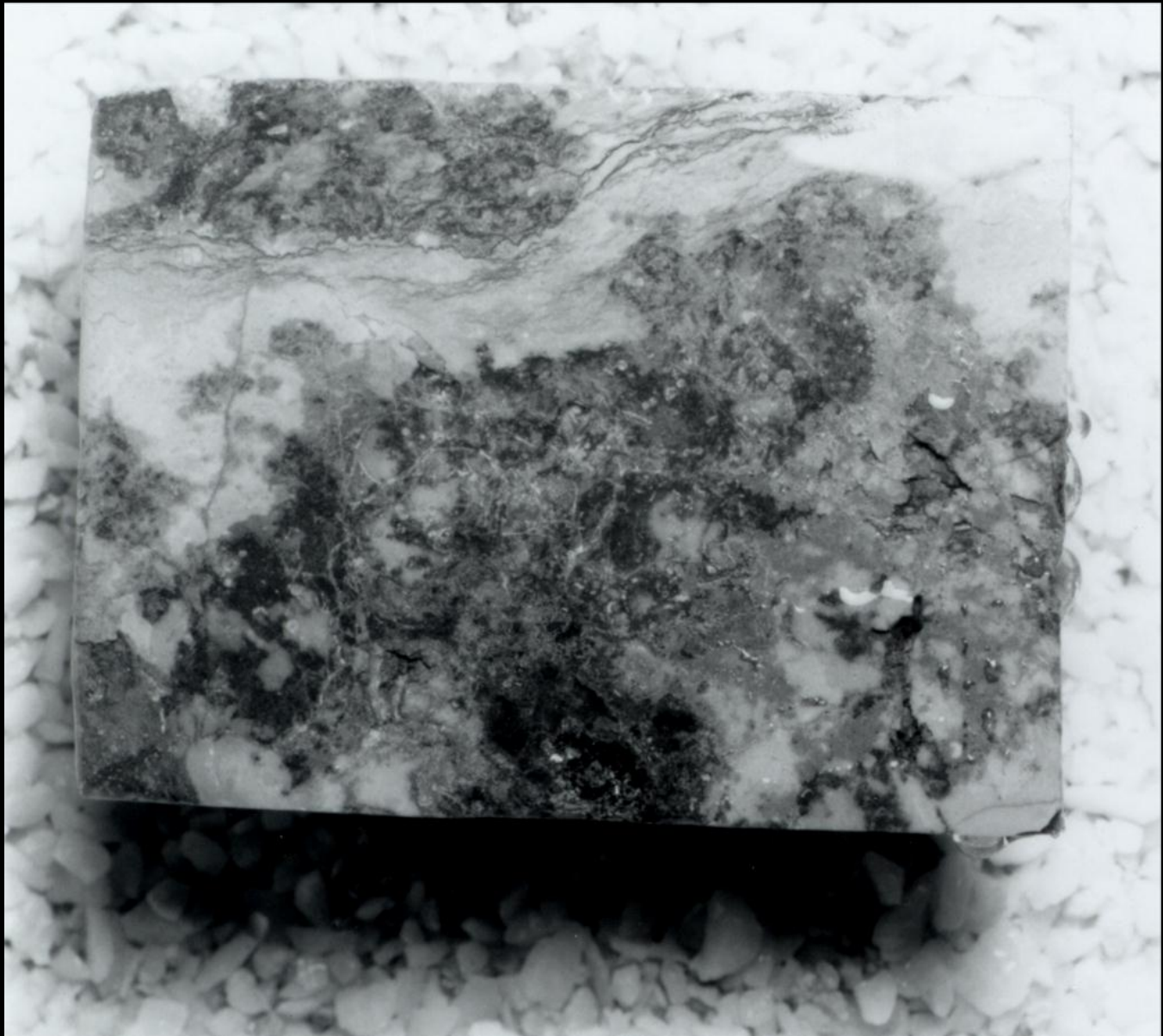
SANDRAN, ↑
20-1-16
2253







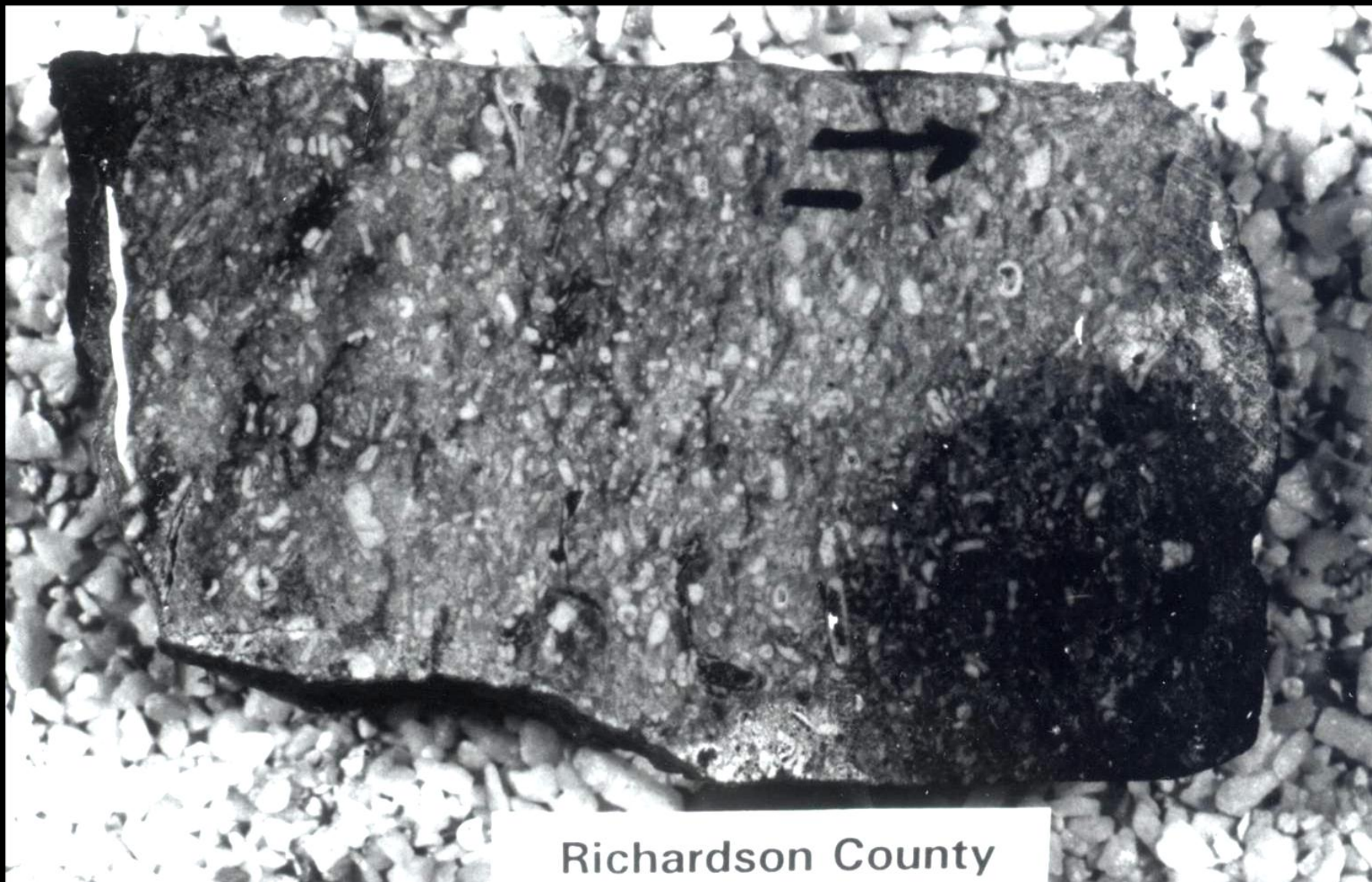
Richardson County





Richardson County





Richardson County

■ OIL

▣ GAS

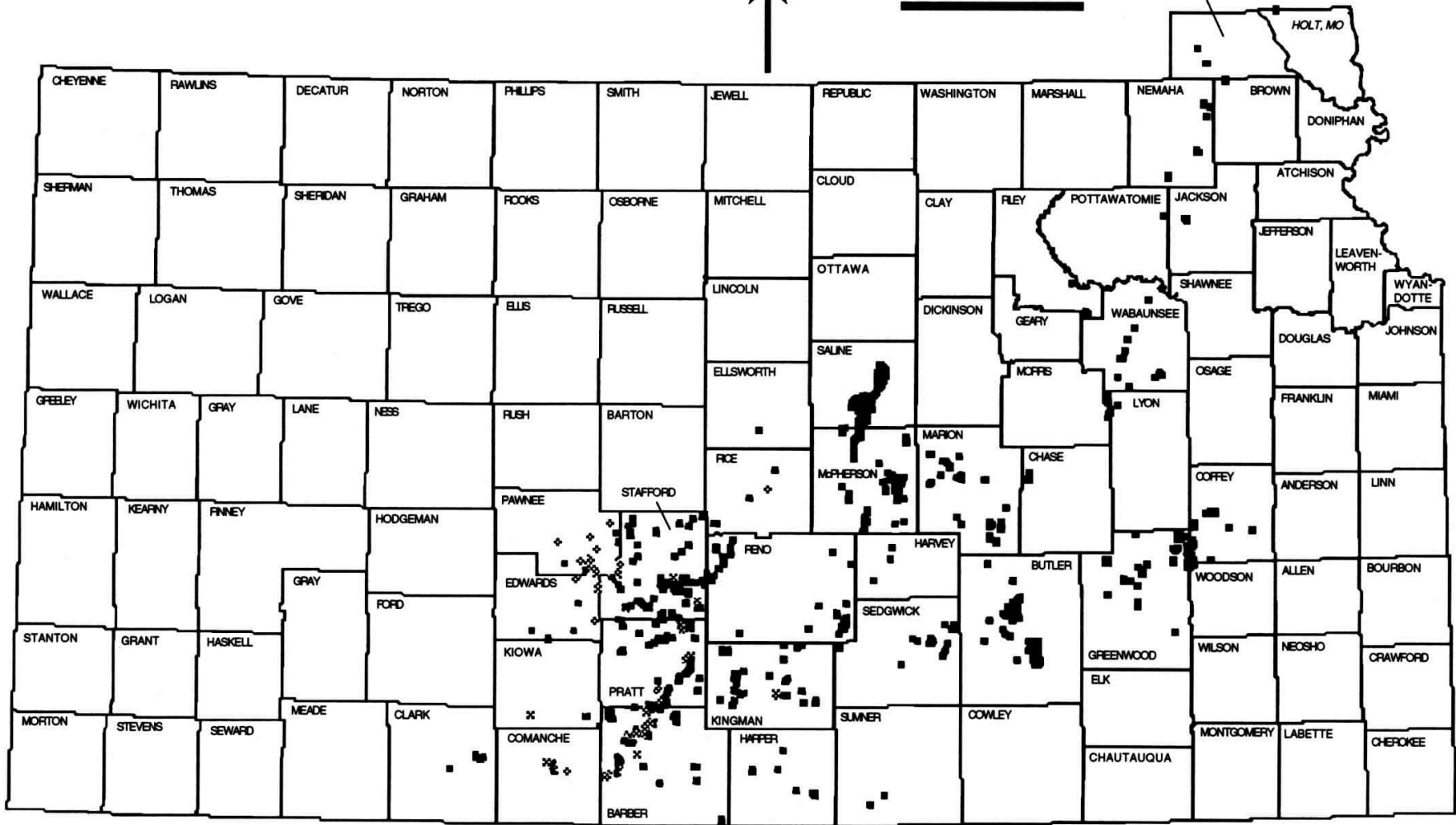


50 km

50 miles

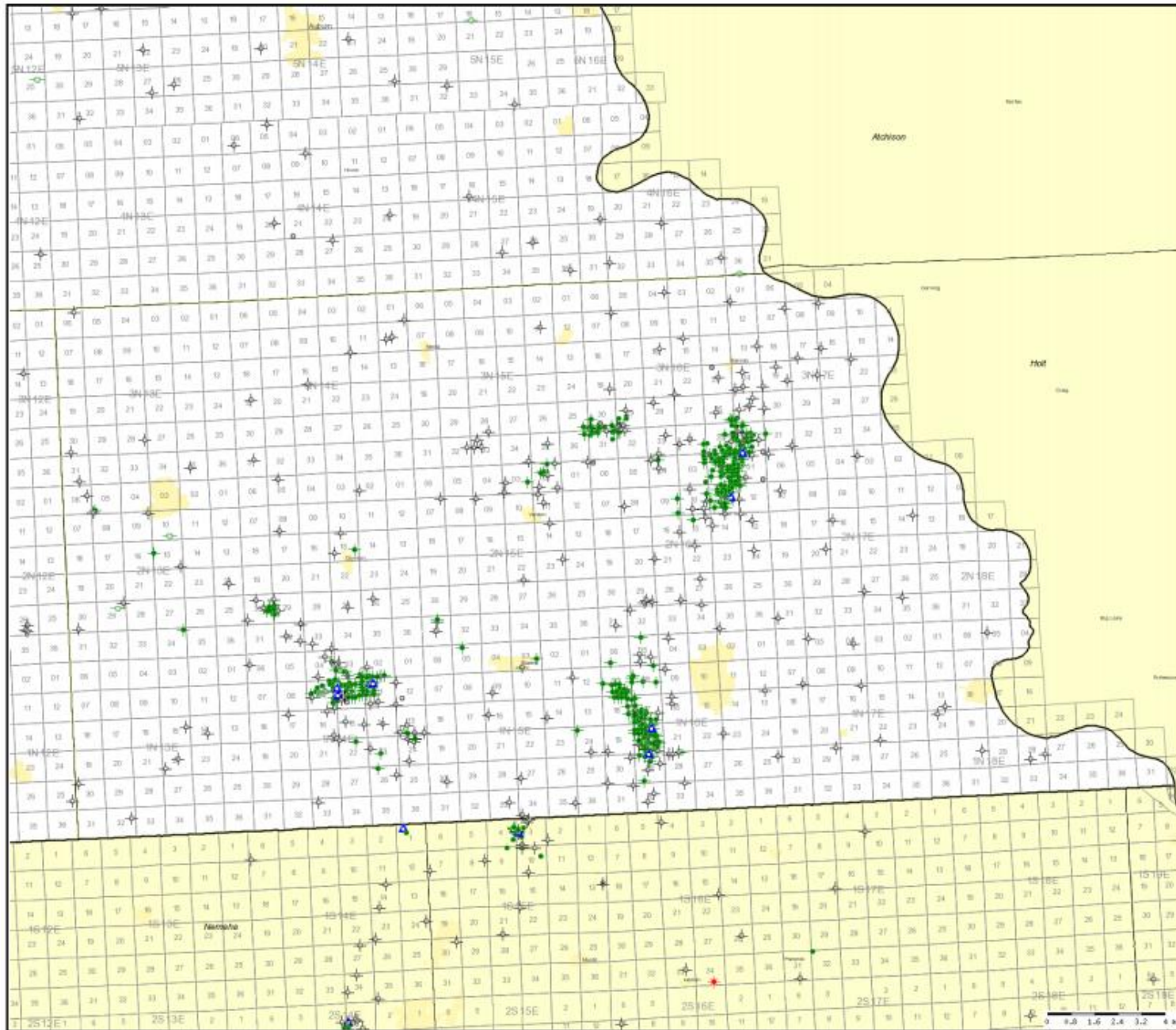
RICHARDSON, NE

HOLT, MO

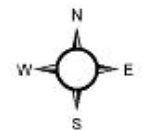


STATE OF NEBRASKA
OIL AND GAS CONSERVATION COMMISSION

PO BOX 389
LINCOLN, NEBRASKA 68502-0389
(405) 254-6919
Fax (405) 254-9322
www.nogcc.org



- ◇ Dry Hole
- ▲ Enhanced Oil Recovery - Injection
- ◻ Expired Locations
- Natural Gas
- ★ Geothermal
- Gas Injection
- Gas Storage
- GSI
- Stratigraphic
- ▲ Water Injection - Disposal
- Water Supply
- Other
- ▲ Flagged Enhanced GSI Recovery
- ▲ Flagged Water Injection - Disposal
- Flagged Natural Gas
- ▲ Flagged Oil
- Permitted Well - GSI
- Permitted Well - Gas
- ◻ Permitted Well - GSI



Every effort has been made to ensure the accuracy of this map. The Nebraska Oil and Gas Conservation Commission assumes no liability for errors or omissions.
7/27/2011

FUTURE ISSUES

BOUNDING STRUCTURES

DEPOSITIONAL PATTERNS

RESERVOIRS

OIL SOURCE/TIMING

FIELD STRUCTURES

FUTURE ISSUES

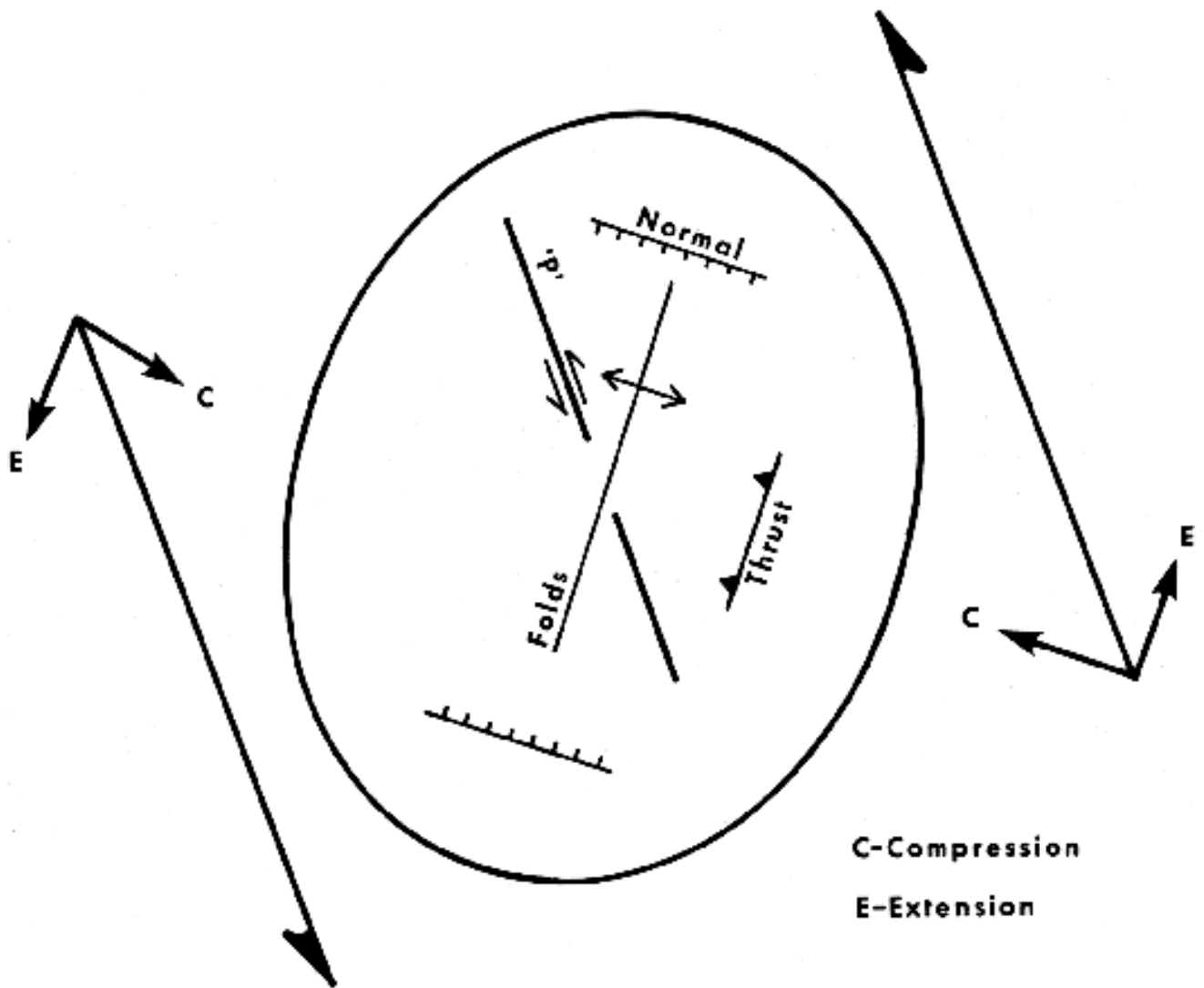
BOUNDING STRUCTURES

DEPOSITIONAL PATTERNS

RESERVOIRS

OIL SOURCE/TIMING

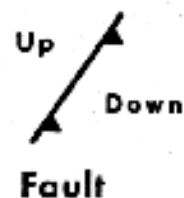
FIELD STRUCTURES



HUNTON CONFIGURATION BARADA FIELD

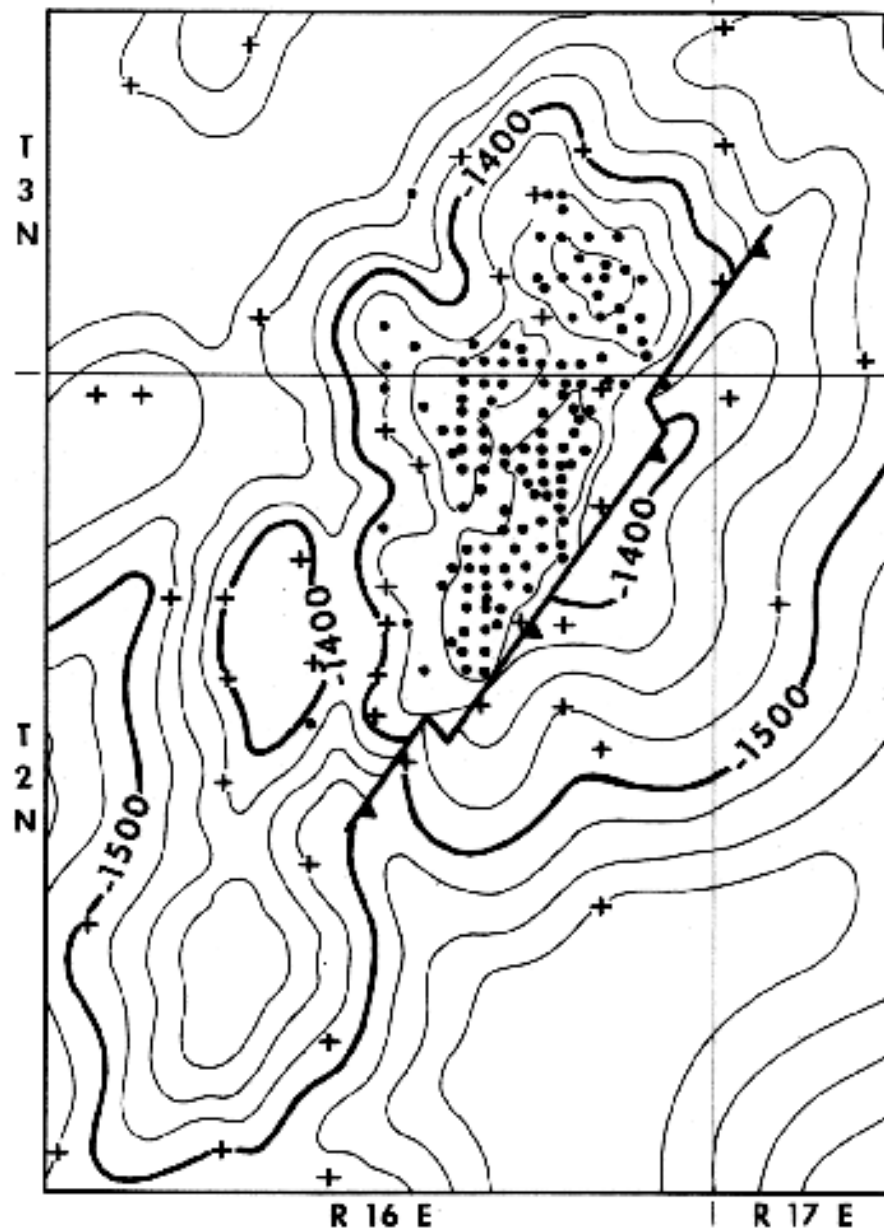


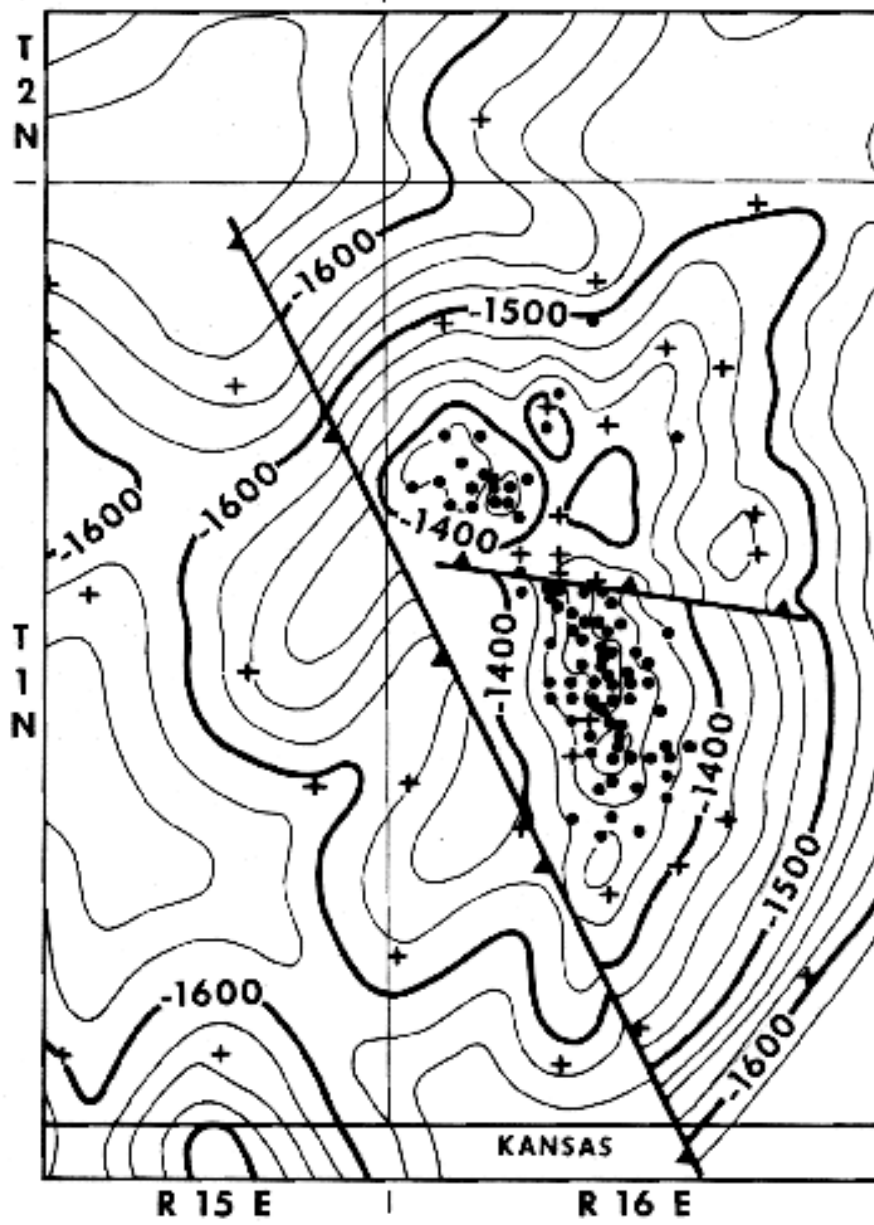
Contour interval 25 feet



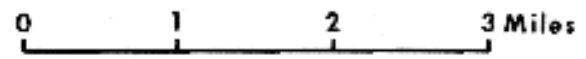
• Oil well + Dry hole

RICHARDSON CO

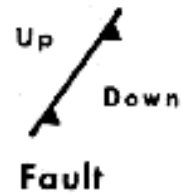




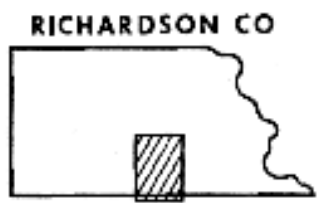
HUNTON CONFIGURATION FALLS CITY FIELD



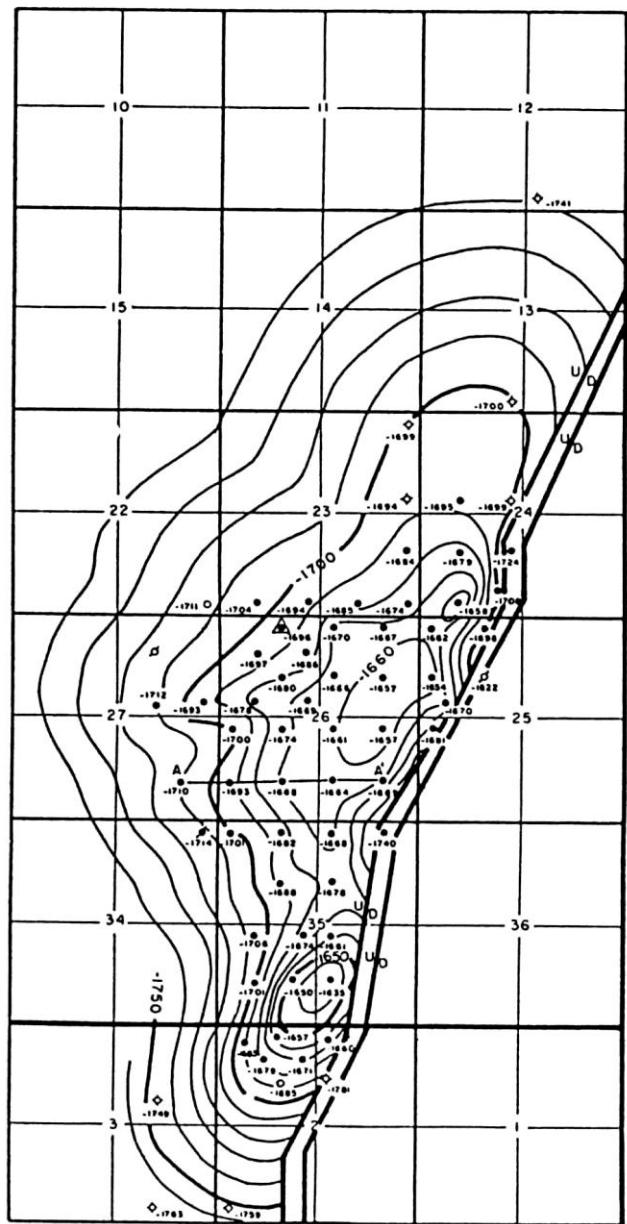
Contour interval 25 feet



• Oil well + Dry hole



R. 9 E.

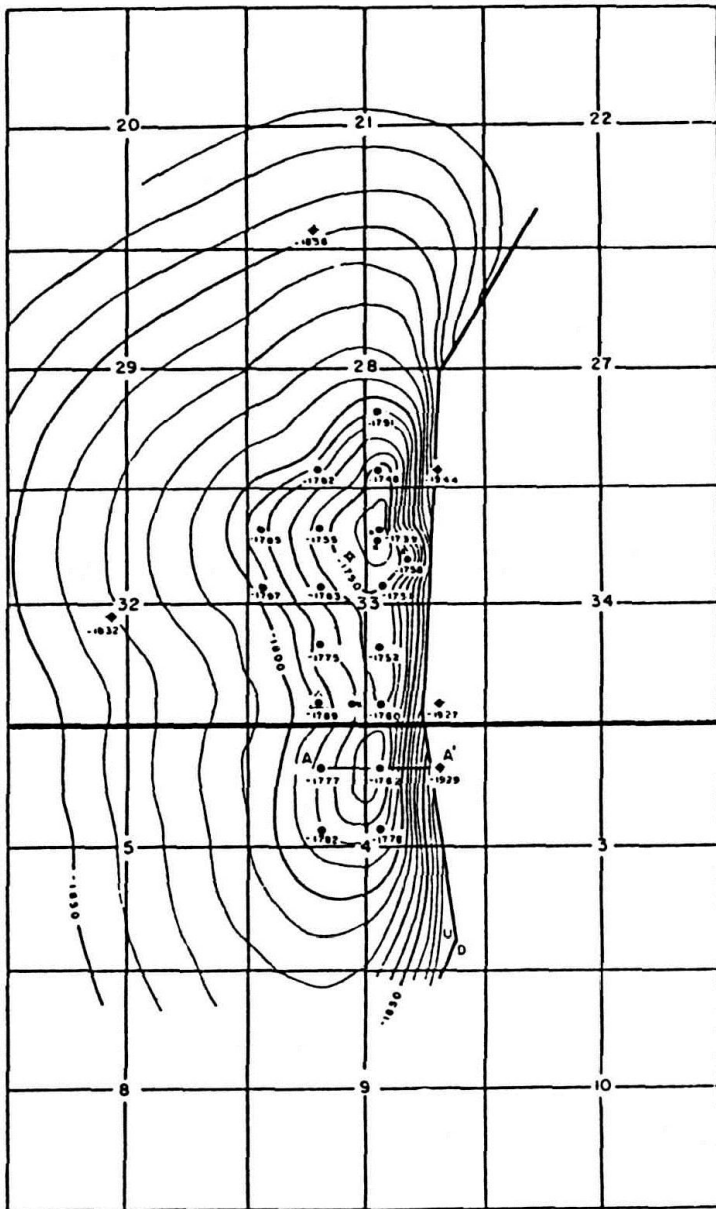


R. 9 E.

T. 15 S.

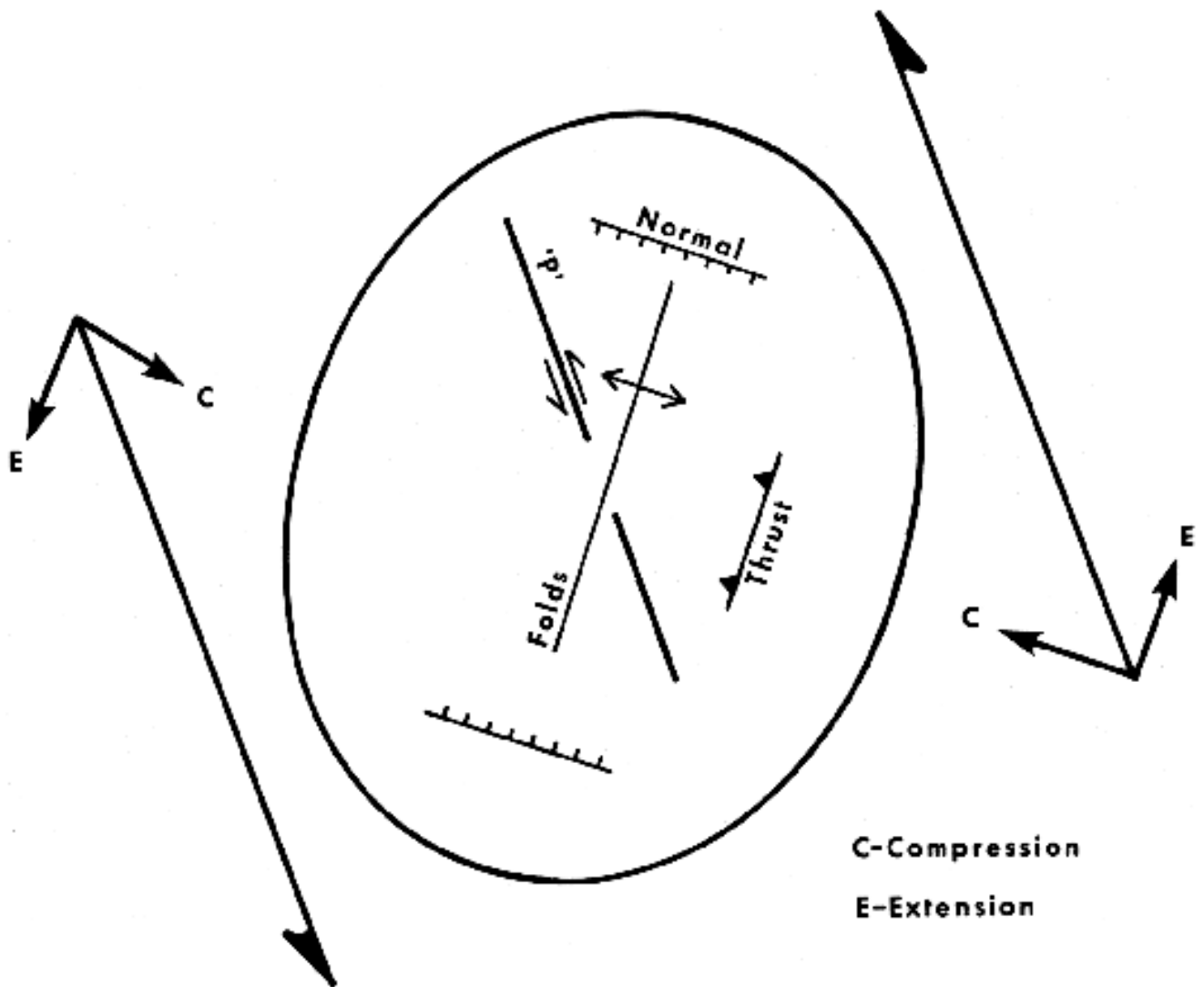
T. 16 S.

RIOE

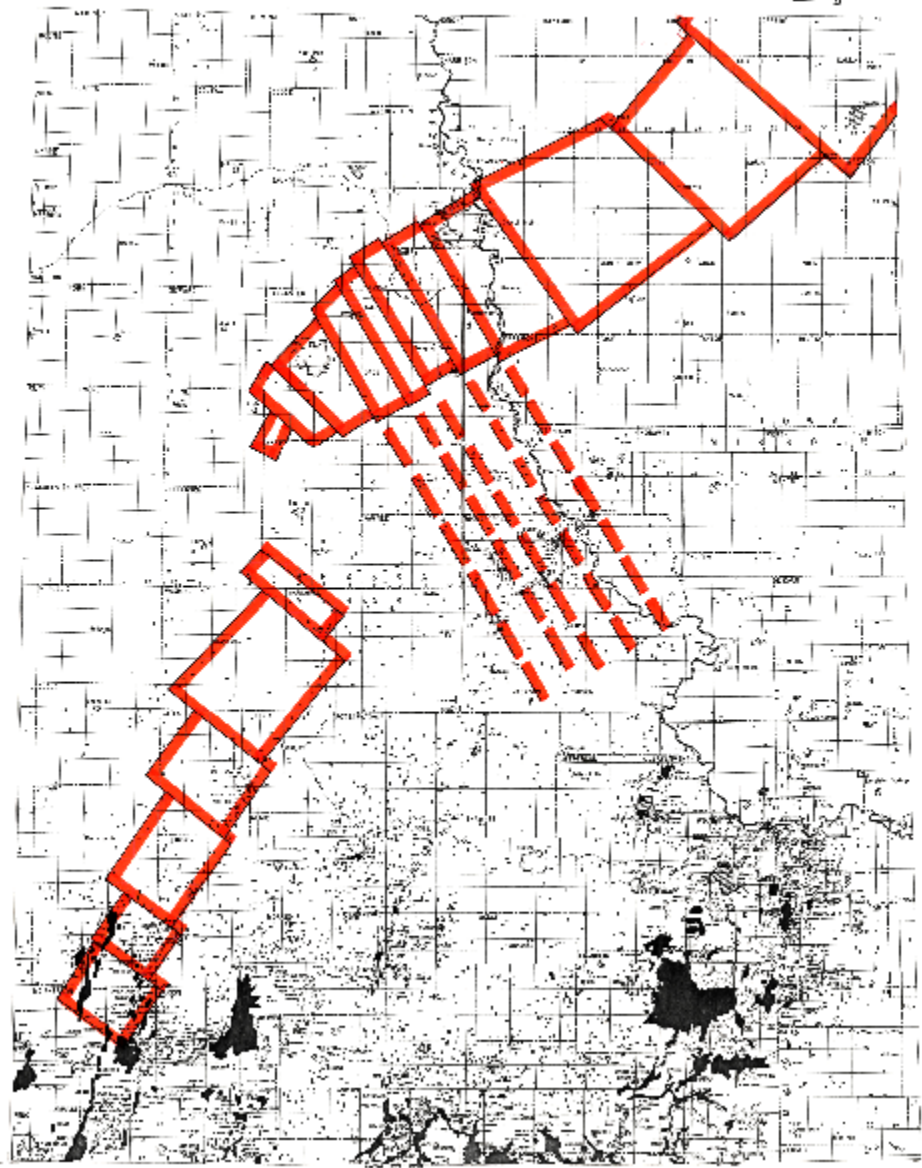
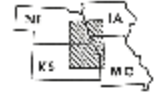


T
13
S

T
14
S



DEEP WELL AND OIL-GAS FIELDS
1983



CONSIDERATIONS

Lack of drilling below the upper Hunton

Expansion of Viola productive trends

Potential in Silurian, Mississippian, Pennsylvanian

Regional facies – shale to limestone to dolomite

Orientation of field structure – folds and faults

Geophysical data is not submitted.

The Forest City Basin

Back to the Future

NOGCC.NE.GOV

Marvin P. Carlson rockdrmpc@hotmail.com

Nebraska Geological Survey Emeritus