

Type Logs for Formal Stratigraphic Correlation in the Nebraska Panhandle

Marvin P. Carlson

Nebraska Geological Survey

and

William H. Sydow

Nebraska Oil and Gas Conservation Commission

NOGCC.NE.GOV/NOGCCONLINEGIS

Regional Structural Framework

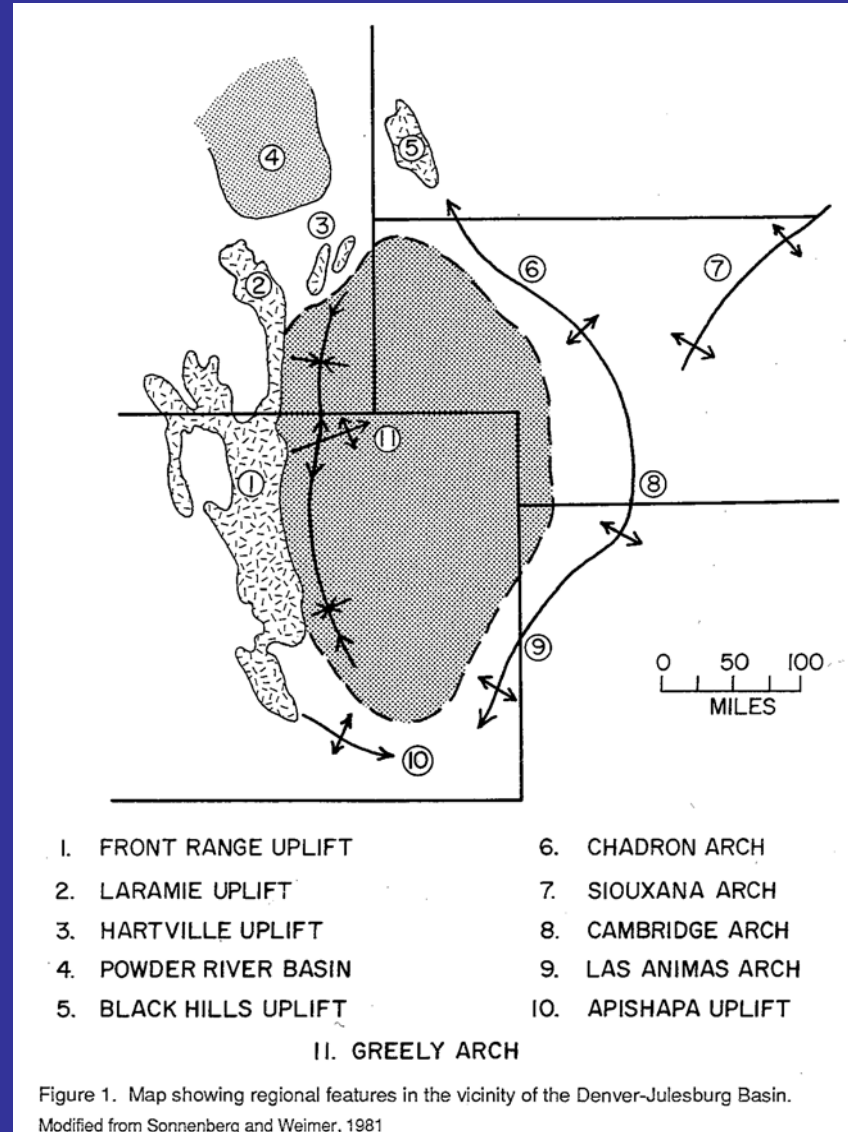


Figure 1. Map showing regional features in the vicinity of the Denver-Julesburg Basin.
Modified from Sonnenberg and Weimer, 1981

Permian Basins

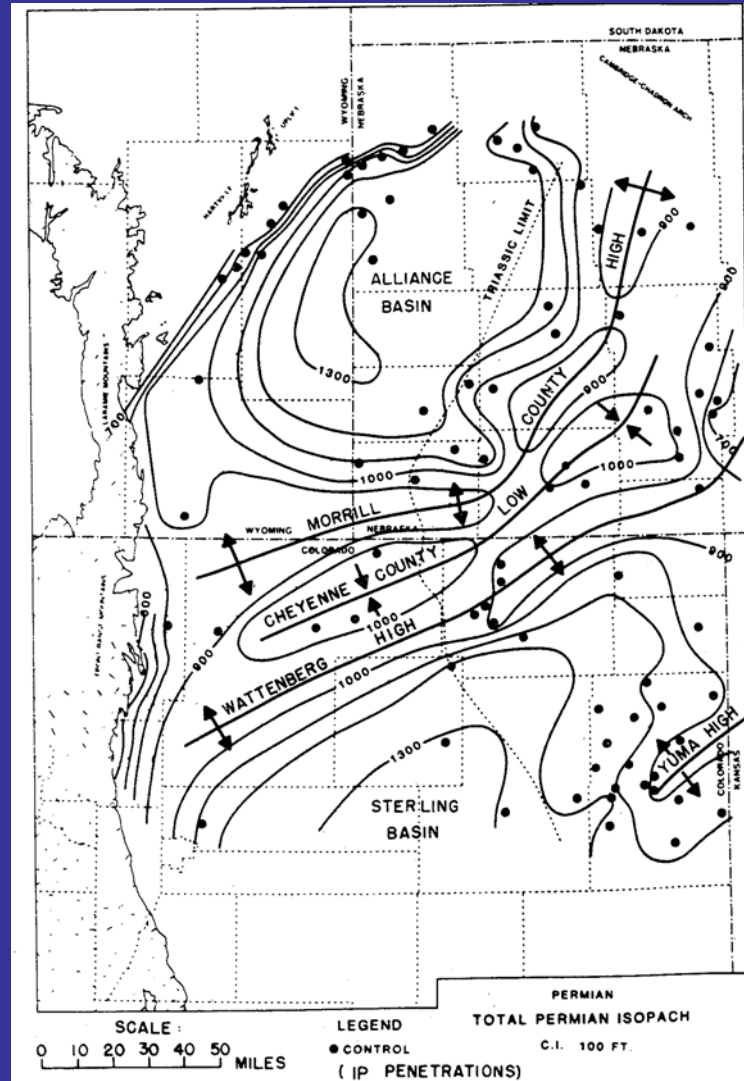


Figure 15. Isopach, total Permian.

Source: Sonnenberg and Weimer, 1981

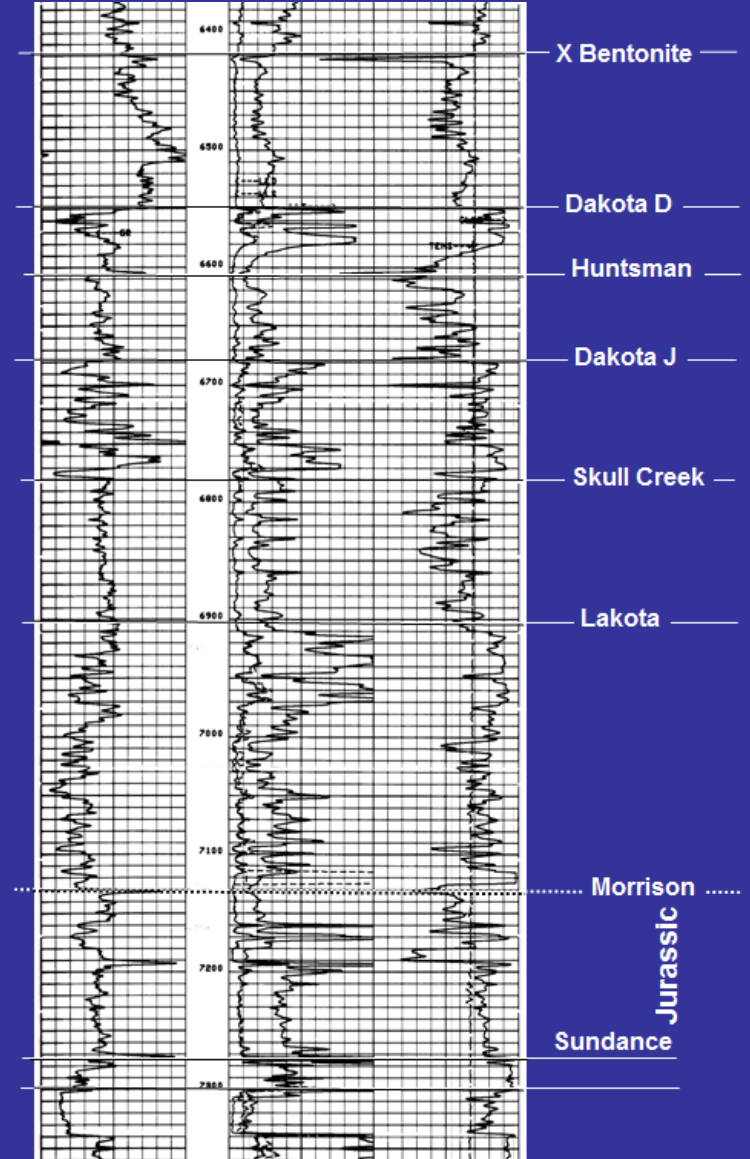
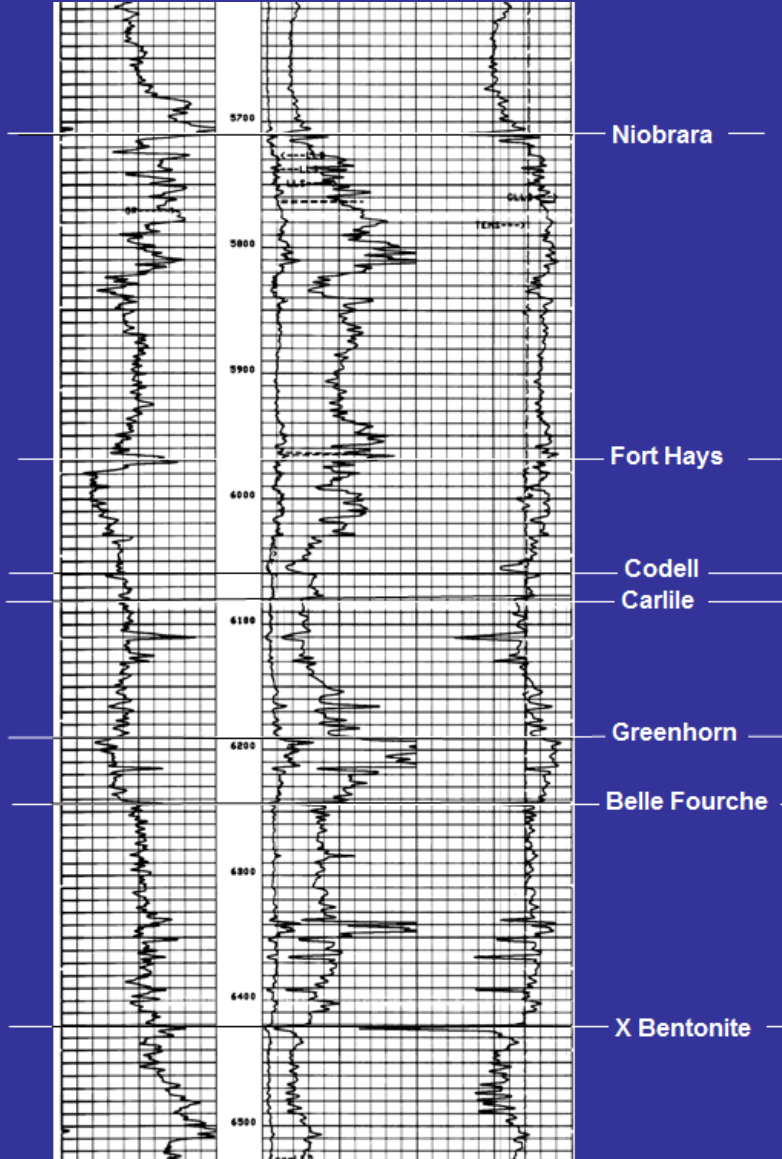
General Stratigraphic Column

TERTIARY	White River	Ogallala
		Hemingford
		Arkaree
		Brule
		Chadron
CRETACEOUS	Fox Hills	
	Pierre	Transition Zone
		Parkman
		Sharon Springs
	Niobrara	Smokey Hill
		Fort Hayes
		Codell
	Carlile	
	Greenhorn	
	Graneros	Belle Fourche
		X Bentonite
	Dakota D	
	Huntsman	
Dakota J		
Skull Creek		
Lakota		
JUR	Morrison	
	Sundance	
TR	Spearfish	

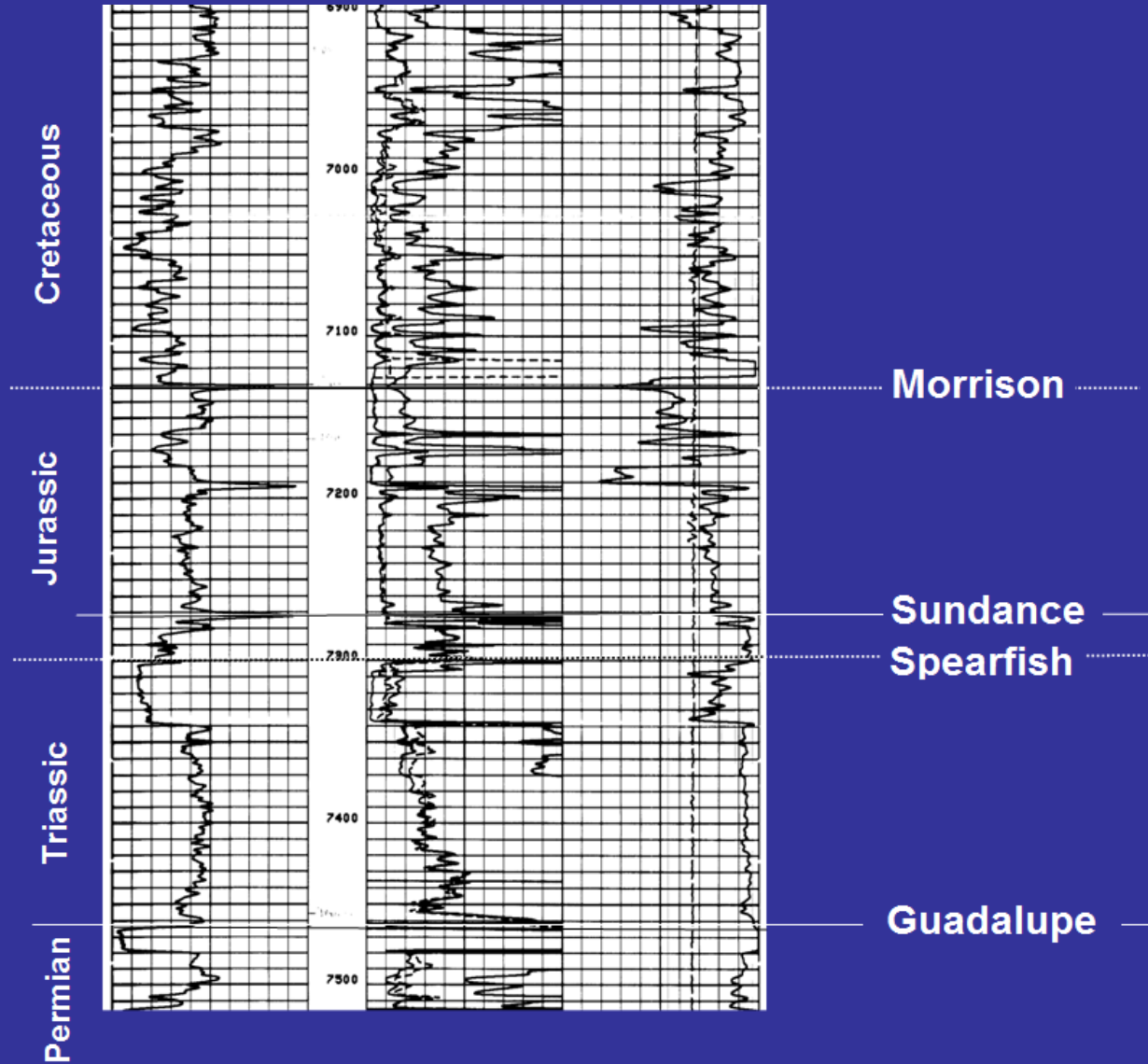
JUR	Morrison	
	Sundance	
TR	Spearfish	
PERMIAN	Guadalupe	Ervey
		Forelle
		Glendo
		Minnekahta
		Opeche
	Leonard	Blaine
		Flowerpot
	Cedar Hills - Lyons	
	Stone Corral	
	Minnescah	
	Wolfcamp	Chase
	Admire	Council Grove
PENNSYLVANIAN	Virgil	Wabaunsee
		Shawnee
	Missouri	Lansing
	Des Moines	Marmaton
		Cherokee
	Atoka	
	Precambrian	

Cretaceous Stratigraphy

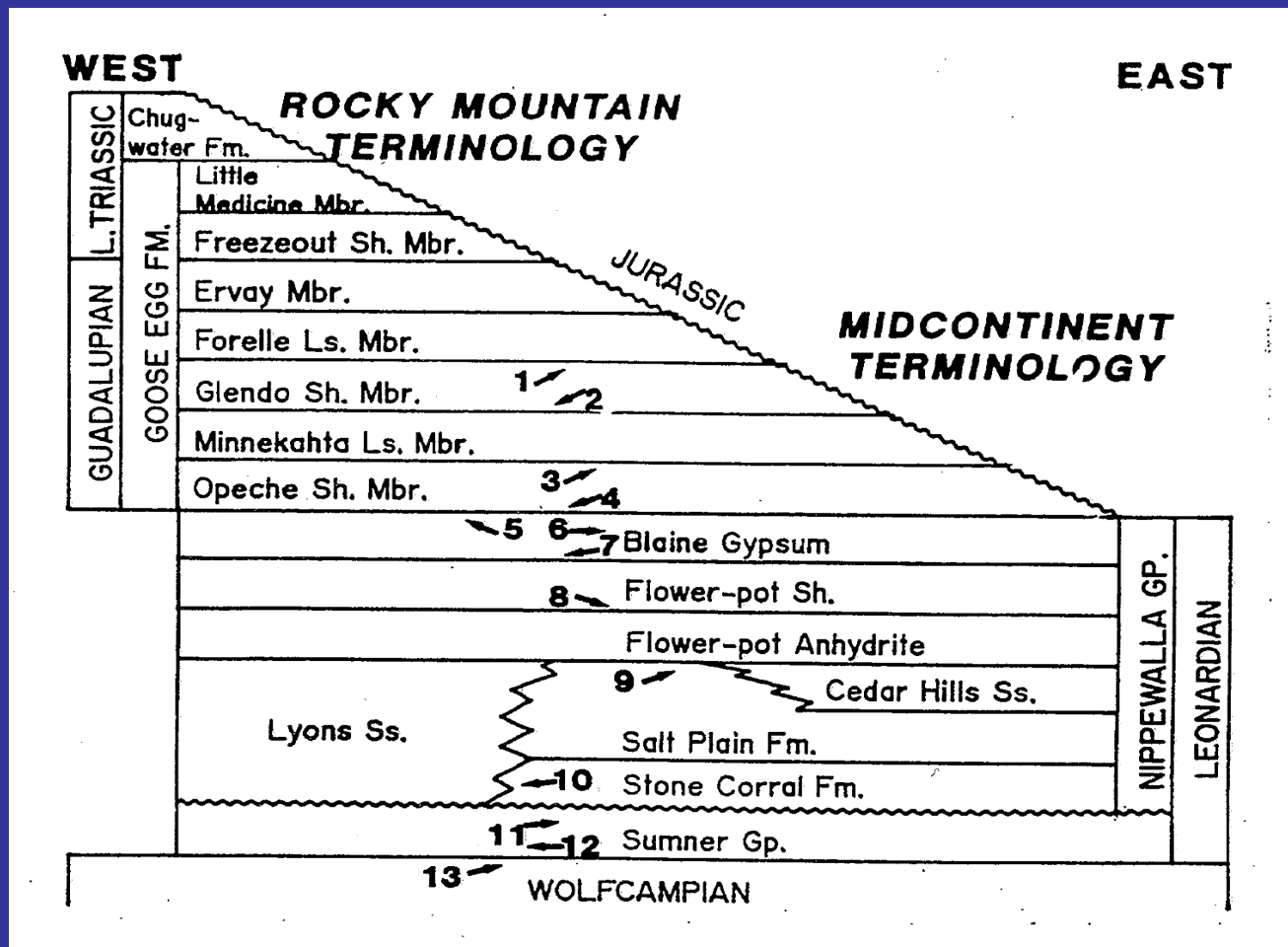
Cretaceous

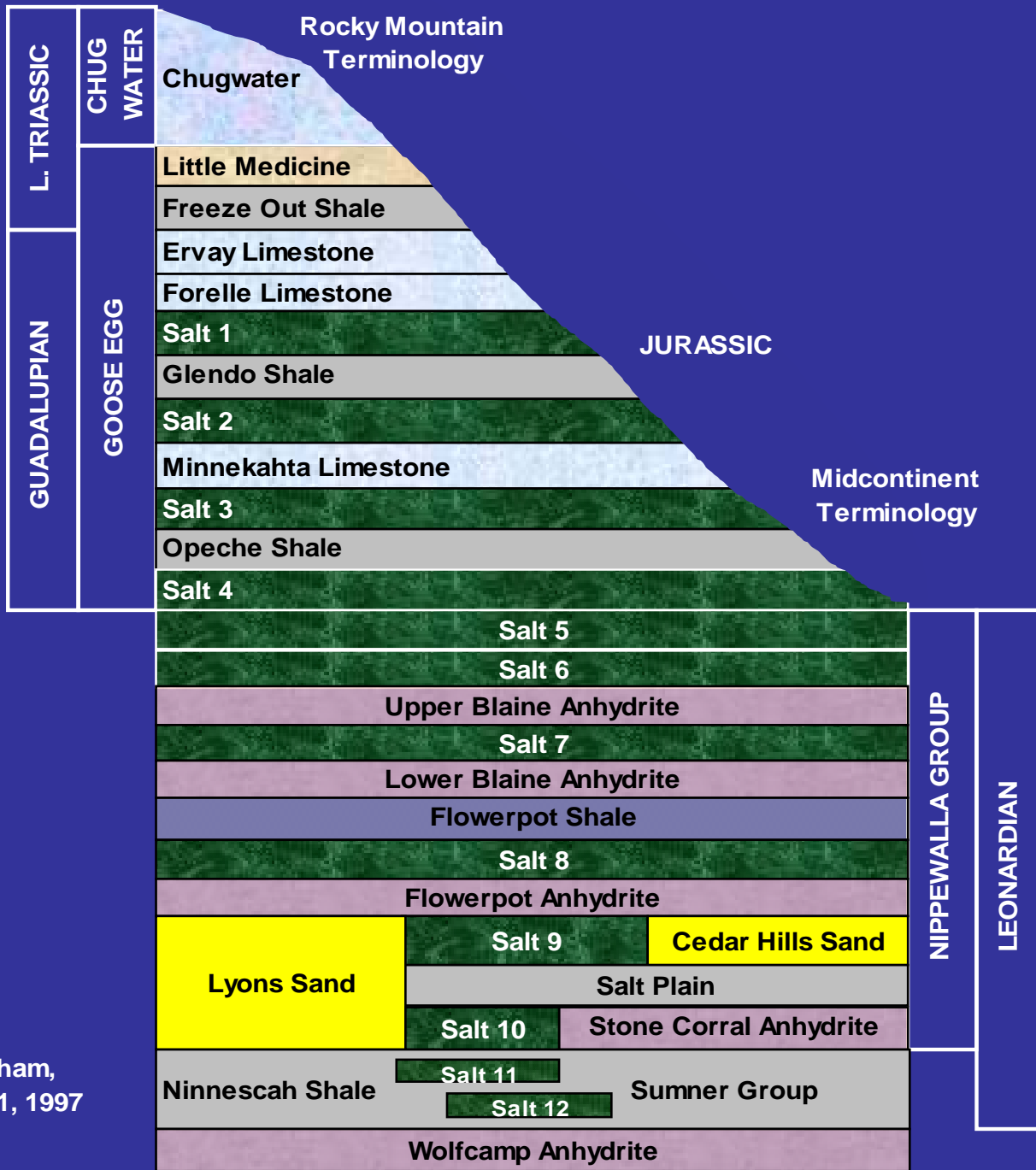


Jurassic – Triassic Stratigraphy



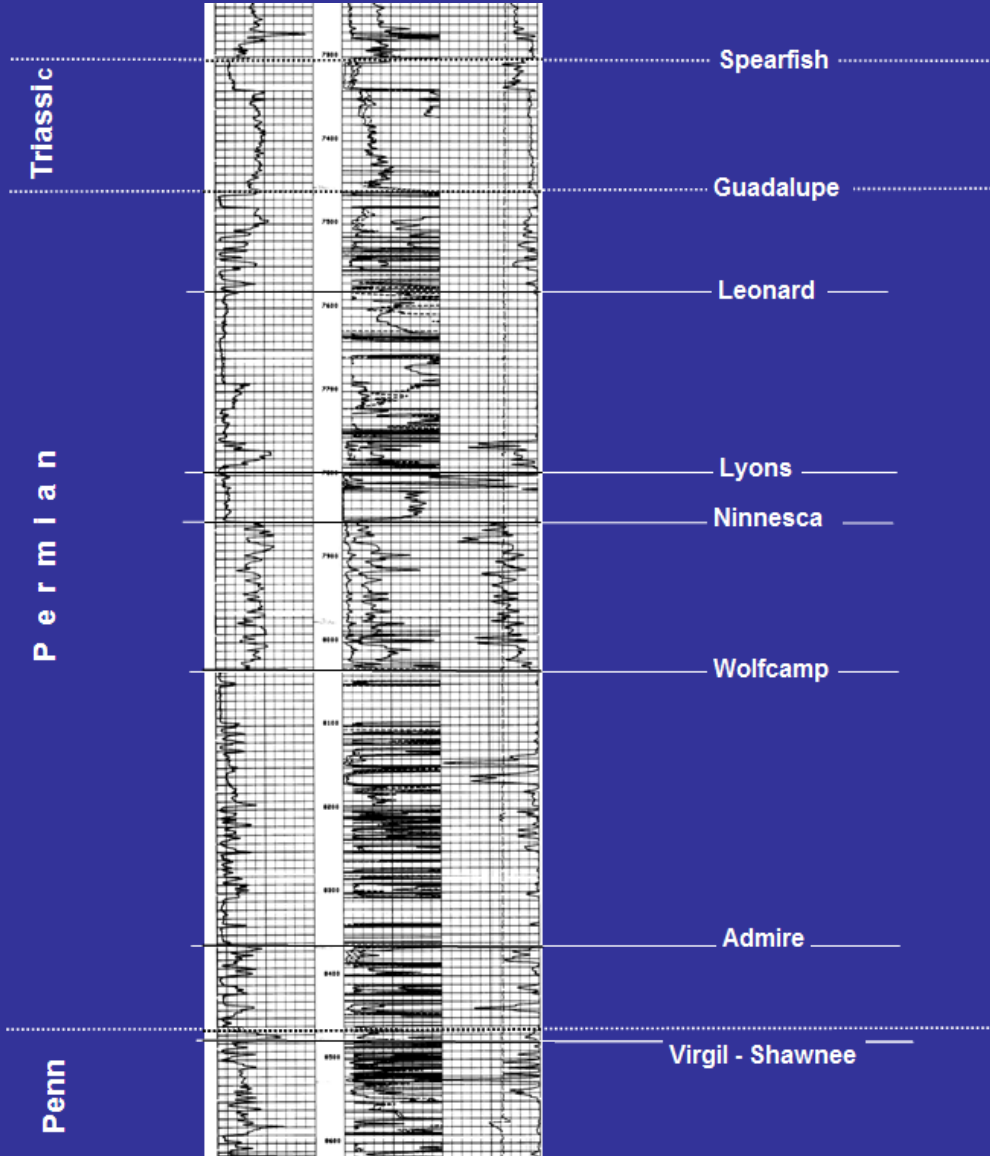
Permian Stratigraphic Complexity



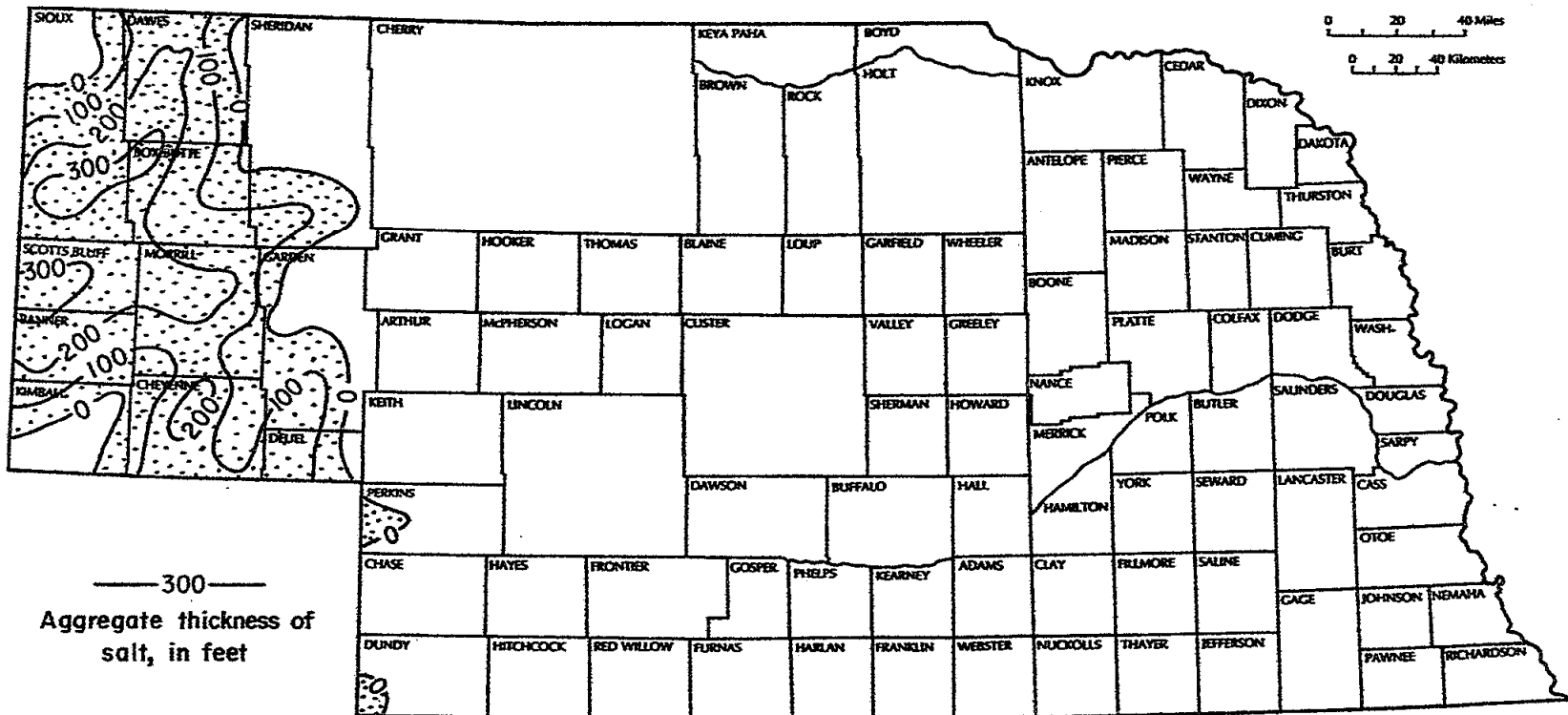


After Oldham,
Figure 3-1, 1997

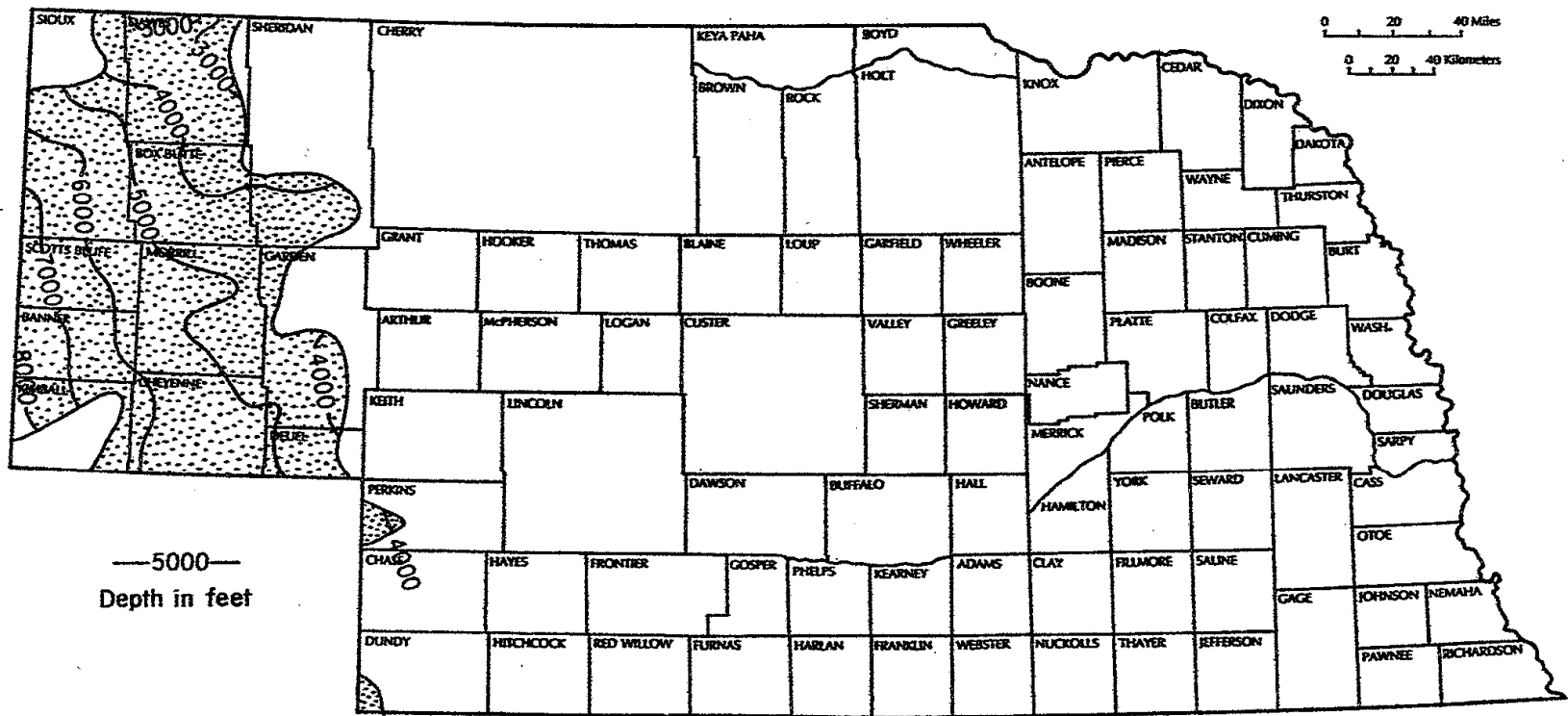
Permian Stratigraphy



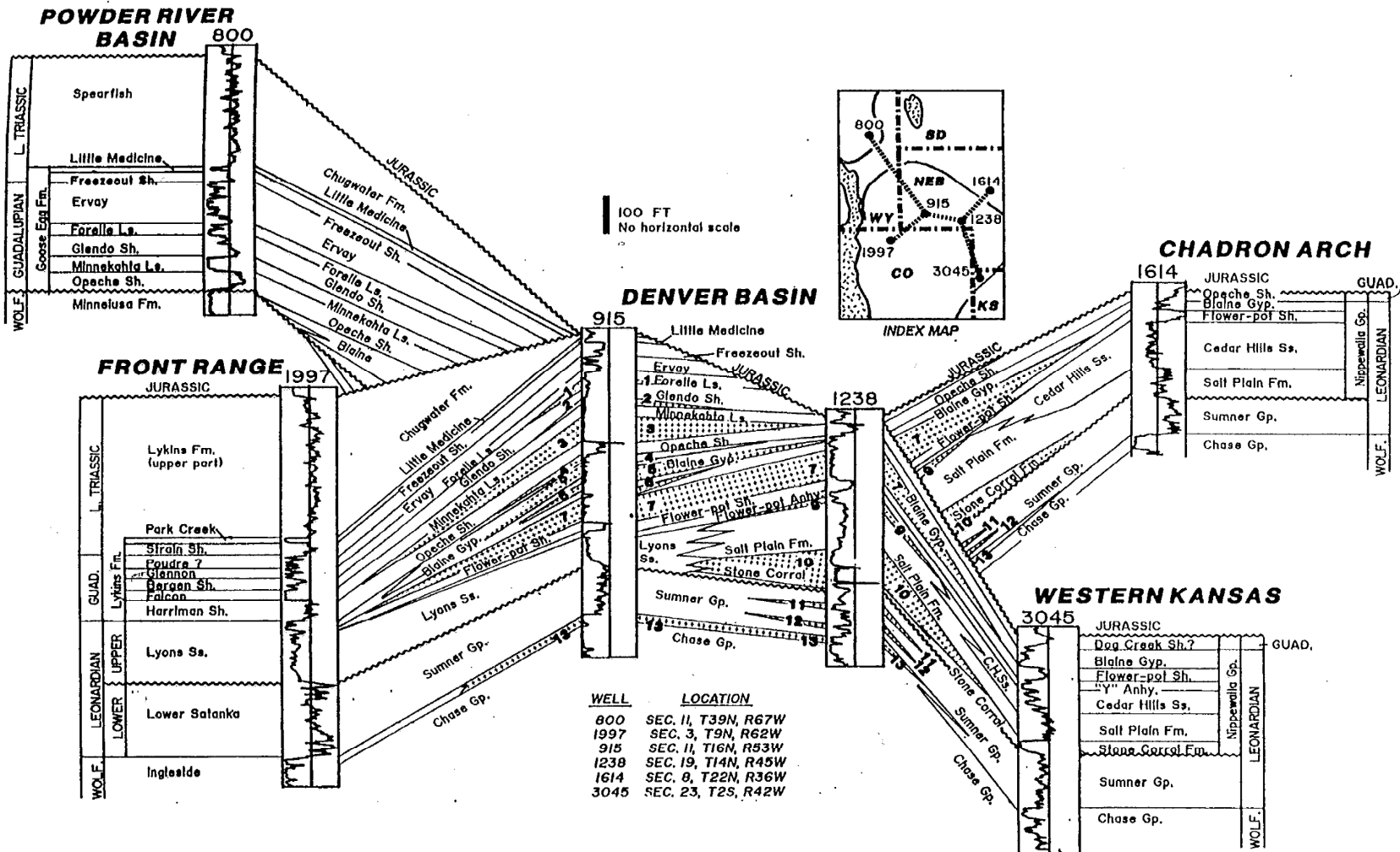
Remaining Permian Salts



Depth to Permian Salts

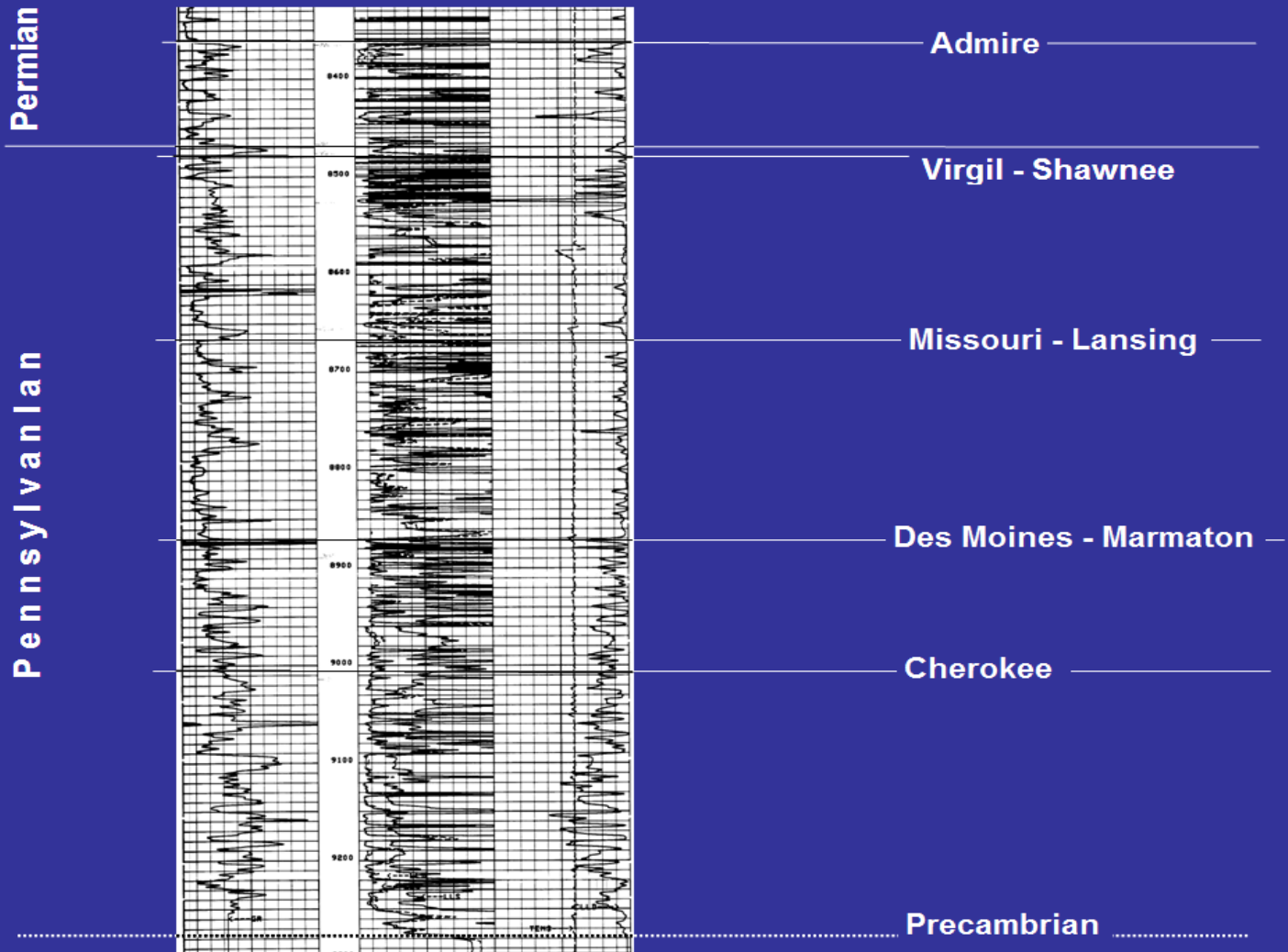


Fence Diagram of Permian

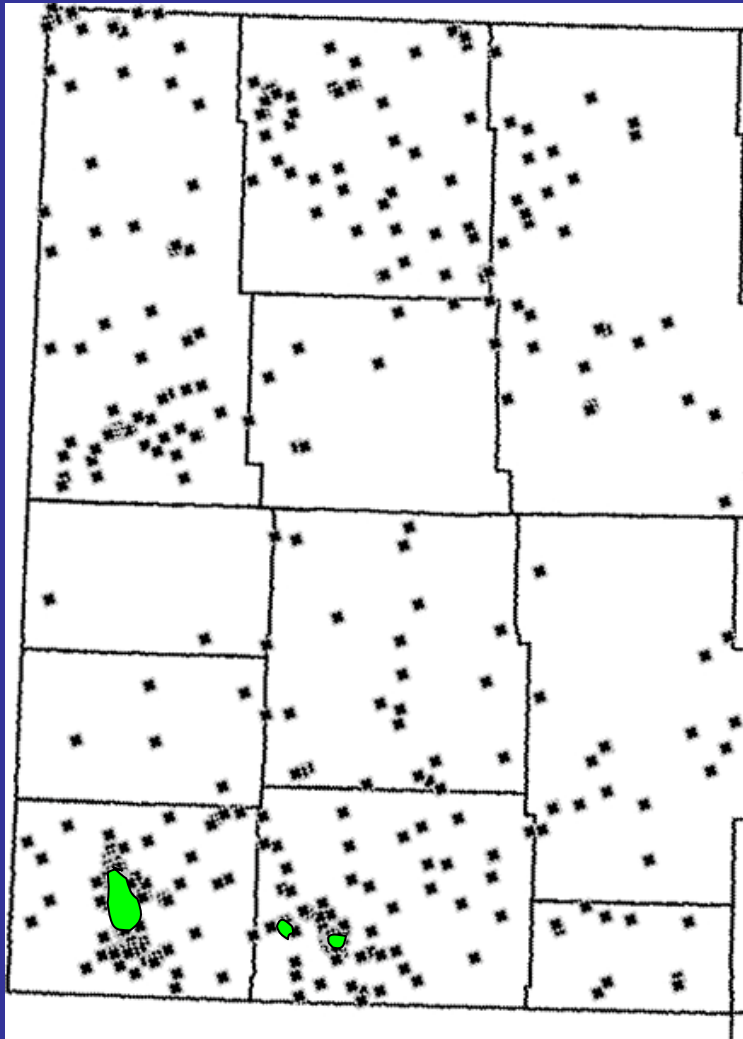


Modified from Oldham, Figure 3-4, 1997

Pennsylvanian Stratigraphy



Permo-Penn Production



Amazon Field

5 Wells

251,935 BO

Bird Field

5 Wells

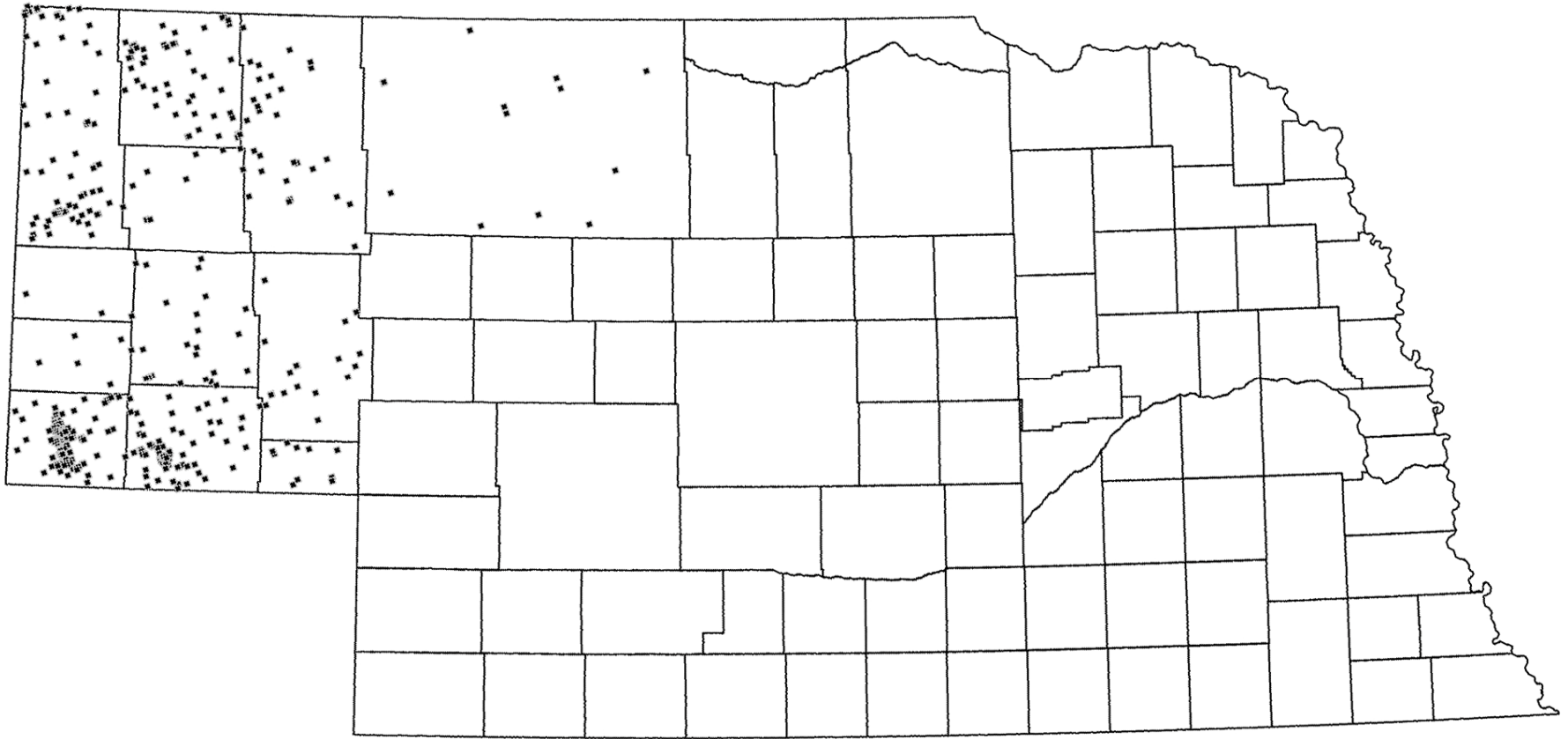
1,990,755 BO

Kleinholz Field

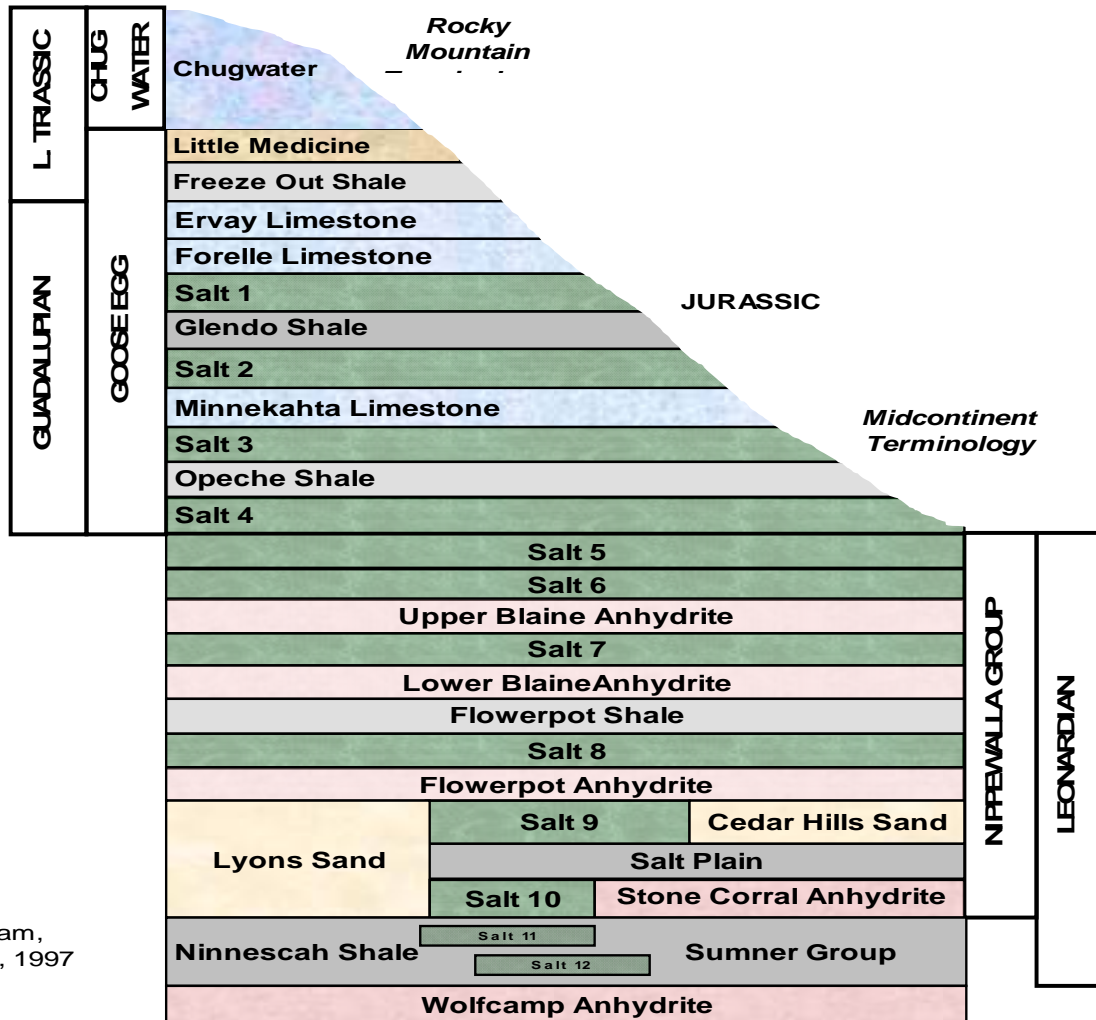
33 Wells

6,668,235 BO

Panhandle Deep Well Locations



Permian Stratigraphic Complexity



After Oldham, Figure 3-1, 1997